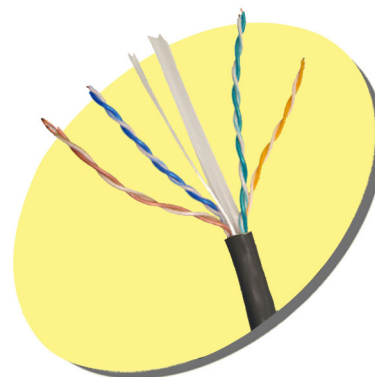
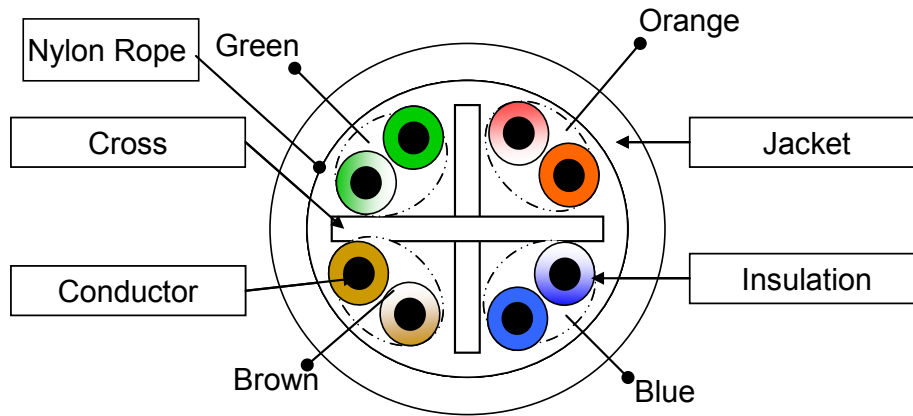


RP-CAT6R00**Cat.6 UTP/4P/24AWG Solid Outdoor Cable****Feature**

- UL 444 & CSA-C22.2 No.214: Type CMX outdoor, 24AWG x 4P
- ANSI/TIA-568-C.2 : Horizontal Cable (Solid Conductor)

Specification

Conductor	<ul style="list-style-type: none"> • Solid Bare copper (1 x AWG24)
Insulation	<ul style="list-style-type: none"> • HDPE(CMI-75E) • Min. Avg. Thickness: 0.178mm; • Min. Thickness: 0.153mm
Color Code	<ul style="list-style-type: none"> • Pair 1: Blue & White/Blue • Pair 2: Orange & White/Orange • Pair 3: Green & White/Green • Pair 4: Brown & White/Brown
Jacket	<ul style="list-style-type: none"> • 75°C PVC CMX outdoor Compound (CMI-800) • Min. Avg. Thickness: 0.578 mm; • Min. Thickness: 0.458 mm • Approximate Overall diameter: 6.5 mm +/- 0.3mm
Electric Requirements (Cable length: 100M)	<ul style="list-style-type: none"> • Characteristic Impedance(Z_0): 85~115Ω (1~250 MHz) • DC. Resistance Capacitance Unbalance: 5% • Pair-to-Ground Capacitance Unbalance: 330 pF/100M Max • Conductor Resistance: 9.38Ω/ 100M 20°C Max • Mutual Capacitance: 5600 pF/100 m Max • Spark Test: 2.5KV • Nominal Velocity of Propagation (NVP): 69 %



Frequency MHz	Att. Solid	Pr-Pr NEXT	PS NEXT	Prop. Delay ns	Delay Skew ns	Return Loss	Pr-Pr ELFEXT	PS ELFEXT
1	2.0	74.3	72.3	570	45	20.0	67.8	64.8
10	6.0	59.3	57.3	545	45	25.0	47.8	44.8
20	8.5	54.8	52.8	542	45	25.0	41.8	38.8
31.25	10.7	51.9	49.9	540.4	45	23.6	37.9	34.9
62.5	15.4	47.4	45.4	538.6	45	21.5	31.9	28.9
100	19.8	44.3	42.3	537.6	45	20.1	27.8	24.8
200	29.0	39.8	37.8	536.5	45	18.0	21.8	18.8
250	32.8	38.3	36.3	536.3	45	17.3	19.8	16.8

Ordering information

RP-CAT6R00 Cat.6 UTP 4P 24AWG Solid cable in PVC Outdoor jacket