

# 300Mbps WiFi Range Extender



## Quick Installation Guide

This device complies with part 15 of the FCC Rules. Operation is subject to the following two conditions:  
 (1) This device may not cause harmful interference, and  
 (2) this device must accept any interference received, including interference that may cause undesired operation.

### System Requirements

1. Pentium 200MHZ processor or above
2. Windows 98SE, Windows Me, Windows 2000, Windows XP, Windows Vista, Windows 7 and Windows 8.

### Package Content

1. 11n WiFi Range Extender
2. Quick Installation Guide
3. Ethernet Cable (RJ-45)

### Installation & Setup

Follow each STEP carefully and only go to the next step once you have completed the previous STEP.

### STEP 1

#### Connection of 11n WiFi Range Extender



- Step 1. Connect the Ethernet cable to LAN Port  
Connect the supplied RJ45 Ethernet cable from your PC's Ethernet port to the 11n WiFi Range Extender's LAN Port.
- Step 2. Connect the 11n WiFi Range Extender to your wall-mounted power outlet.

### LED Meaning

Your 11n WiFi Range Extender has indicator lights on the Top side. Please see below as LED indicator definition.

Ethernet	Ethernet Active indicator
Power	Power indicator
Wireless	Wireless Active indicator
WPS	WPS Active indicator
WiFi Signal	Wireless Signal Strength indicator

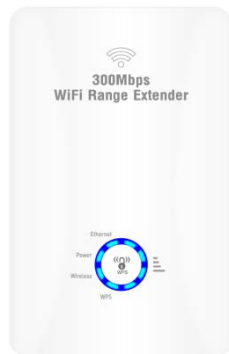


Table1. LED function

Label	Color	On	Flash	Off
Ethernet	Blue	Ethernet Connected	Transmit / Receive Data	Ethernet Disconnected
Power	Blue	Ready	Waiting for device ready	Power Off
Wireless	Blue	WLAN Ready	Transmit / Receive Data	WLAN Off
WPS	Blue	N/A	Start WPS pairing within 2 minutes	WPS Idle
WiFi Signal	Blue	Ethernet Connected	Transmit / Receive Data	No WAN IP address from xDSL / Cable Modem

### Connectors

Table 2 shows the function of each connector and button of the device.

Table 2. Function / Description of Connectors

Connector	Description
Ethernet	Connects the device via LAN Ethernet to a PC
WPS	<b>WPS</b> Press this button for 3 full seconds and the WPS LED will flash to start WPS.  <b>Make sure to press the button within 120 seconds (2 minutes) after pressing the Wireless xDSL/Cable Modem's WPS button.</b>
RESET	<b>RESET</b> Reset button. <b>RESET</b> the 11n WiFi Range Extender to its default settings. Press this button for at least 3 full seconds to <b>RESET</b> device to its default settings.

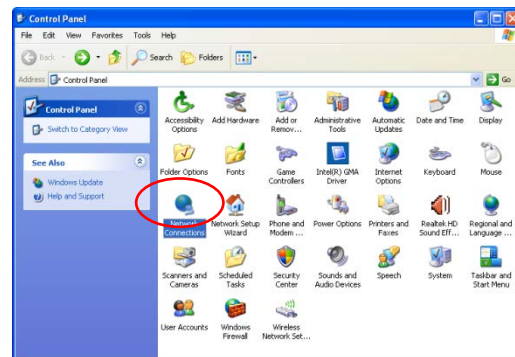
### STEP 2

#### Configuration Procedures

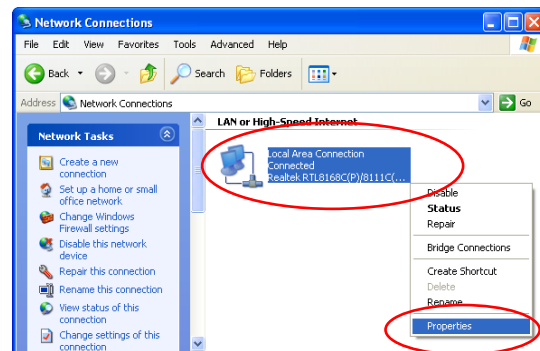
Before starting the 11n WiFi Range Extender configuration, please kindly configure the PC computer as below, to have automatic IP address / DNS Server.

#### For Windows 98SE / ME / 2000 / XP

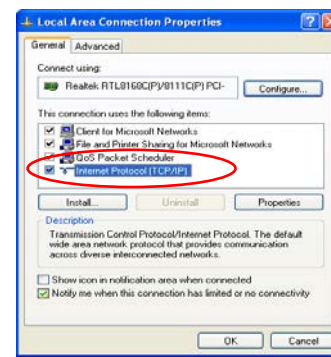
1. Click on "Start" -> "Control Panel" (in **Classic View**). In the Control Panel, double click on "Network Connections" to continue.



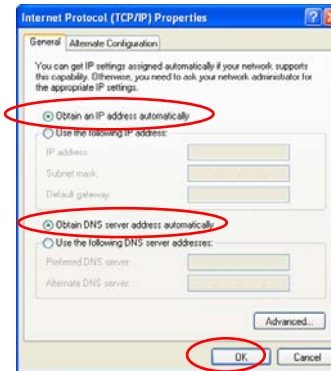
2. Single RIGHT click on "Local Area connection", then click "Properties".



3. Double click on "Internet Protocol (TCP/IP)".



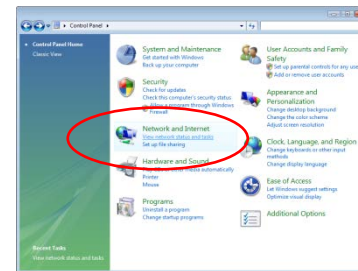
4. Check "Obtain an IP address automatically" and "Obtain DNS server address automatically" then click on "OK" to continue



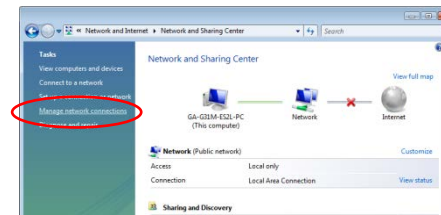
5. Click "Show icon in notification area when connected" (see screen image in 3. above) then Click on "OK" to complete the setup procedures.

#### For Windows Vista-32 / 64

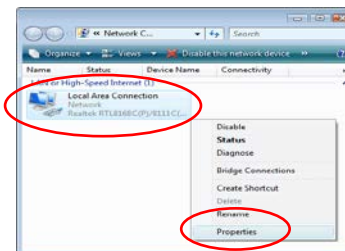
1. Click on "Start" -> "Control Panel" -> "View network status and tasks".



2. In the Manage network connections, click on "Manage network connections" to continue.

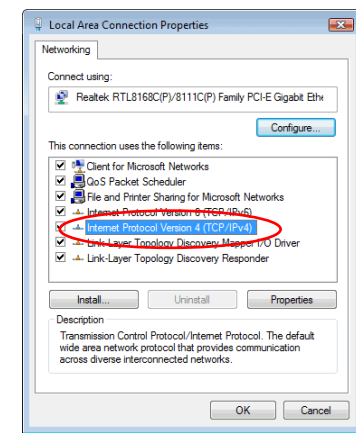


3. Single RIGHT click on "Local Area connection", then click "Properties".

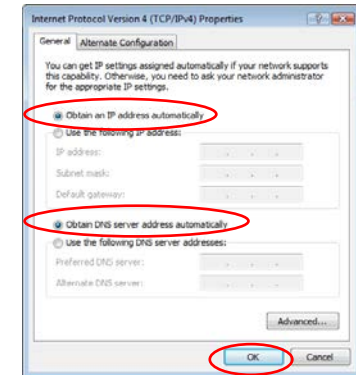


4. The screen will display the information "User Account Control" and click "Continue" to continue.

5. Double click on "Internet Protocol Version 4 (TCP/IPv4)".

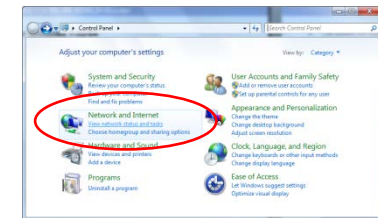


6. Check "Obtain an IP address automatically" and "Obtain DNS server address automatically" then click on "OK" to continue.

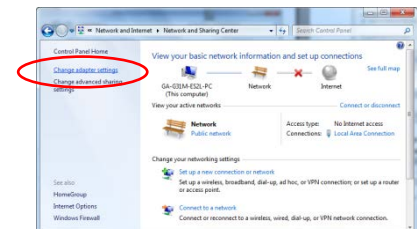


#### For Windows 7-32/64

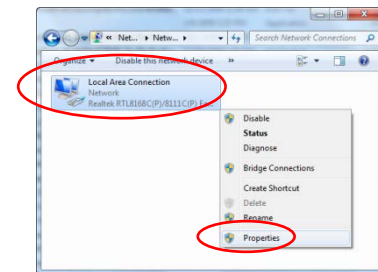
1. Click on "Start" -> "Control Panel" (in **Category View**) -> "View network status and tasks".



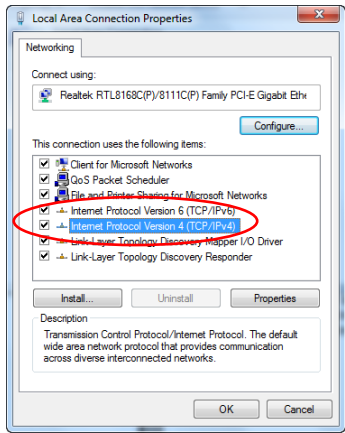
2. In the Control Panel Home, click on "Change adapter settings" to continue.



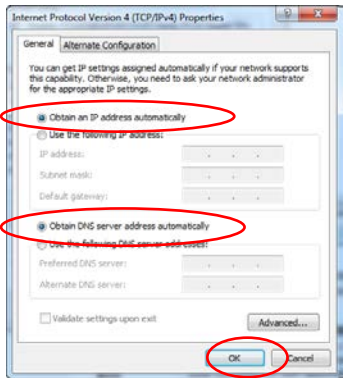
3. Single RIGHT click on "Local Area connection", then click "Properties".



4. Double click on "Internet Protocol Version 4 (TCP/IPv4)".



5. Check "Obtain an IP address automatically" and "Obtain DNS server address automatically" then click on "OK" to continue.

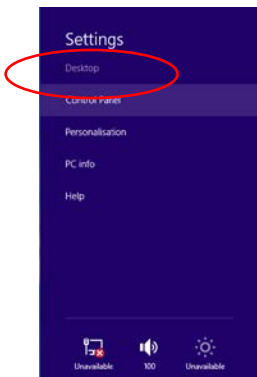


**For Windows 8-32/64**

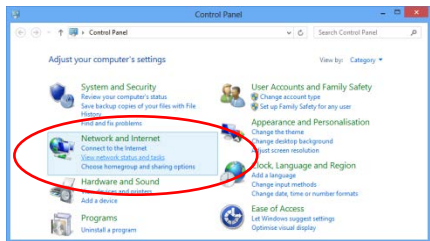
1. Move the mouse or tap to the upper right corner and click on "Settings".



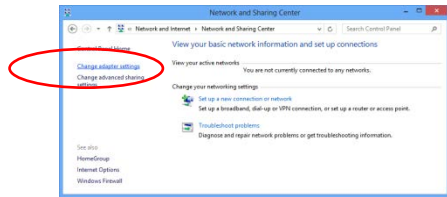
2. Click "Control Panel".



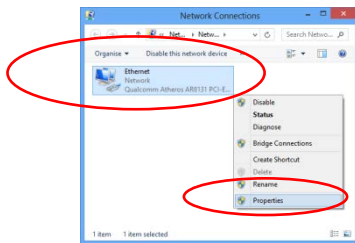
3. Click on "View network status and tasks".



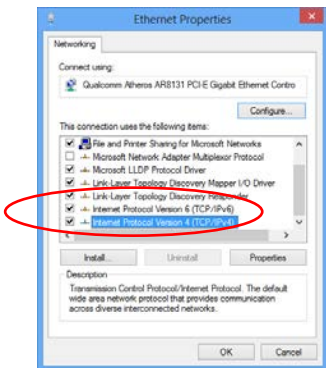
4. In the Control Panel Home, click on "Change adapter settings" to continue.



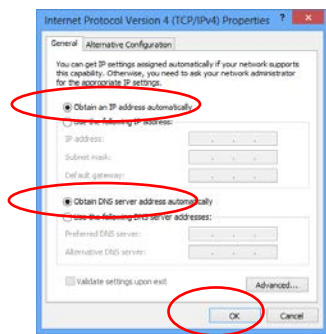
5. Single RIGHT click on "Ethernet", then click "Properties".



6. Double click on "Internet Protocol Version 4 (TCP/IPv4)".



7. Check "Obtain an IP address automatically" and "Obtain DNS server address automatically" then click on "OK" to continue.



**STEP 3  
WPS Pairing between 11n WiFi Range Extender and Wireless xDSL/Cable Modem**

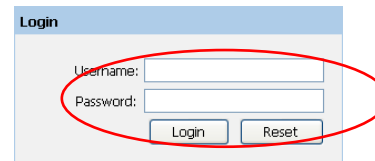


- Step 1. Press WPS button on Wireless xDSL/Cable Modem.
- Step 2. Press WPS button on 11n WiFi Range Extender for 3 seconds and release WPS button. Now the WPS LED is blinking and the 11n Repeater is doing WPS Pairing with Wireless xDSL/Cable Modem. **Make sure to press the button within 120 seconds (2 minutes) after pressing the Wireless xDSL/Cable Modem's WPS button.**
- Step 3. Once the 11n WiFi Range Extender finished doing WPS Pairing with Wireless xDSL/Cable Modem, the Wifi Signal Strength LED is ON. The status of Wifi signal strength LED varies depending on the Wifi signal strength between 11n Repeater and Wireless xDSL/Cable Modem.
- Step 4. Check if the Wifi Signal Strength LED of 11n Repeater is ON, the 11n Repeater is connected and suitable for Internet Connections.
- Step 5. Check if the Wifi Signal Strength is OFF, the 11n Repeater isn't connected and not suitable for Internet Connections. Please repeat **STEP-3** of WPS Pairing or follow next **STEP-4** to have it connected and suitable for Internet connections.

**If the 11n Repeater's WiFi signal strength LED isn't ON, please repeat STEP-3 WPS Pairing or goes STEP-4 configure the 11n Repeater through Advanced Configuration below.**

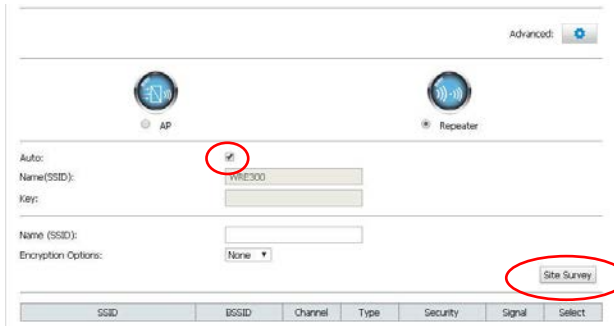
**STEP 4  
11n Repeater Advanced Configuration**

1. From the LAN computer connected , launch your web browser, type the following URL in the web address (or location) box, and press [Enter] on your keyboard:  
**http://10.0.0.2**
2. Please enter the Login User Name: **admin** and Login Password: **administrator** and then click on **Login** button.

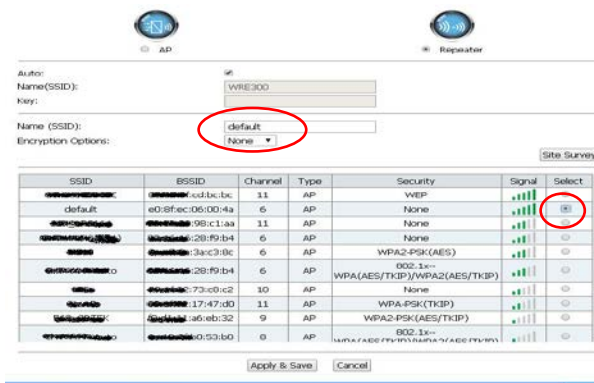


**Repeater Mode (Extend your Wireless Network)**

3. Ticks on **Auto** checkbox.
4. Click on **Site Survey** button and wait for 5 seconds for site surveying.

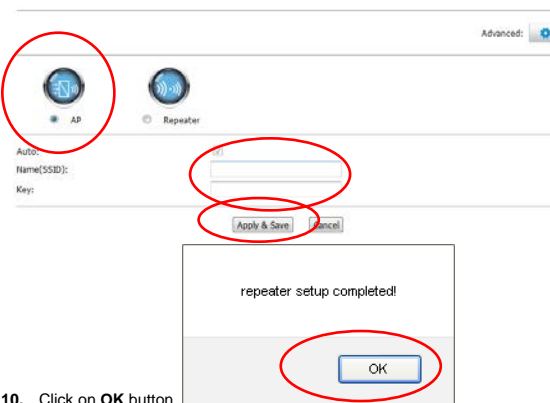


5. Ticks on "Select" ratio of SSID of the front AP and configure related parameters
6. Click on **Apply & Save** button.



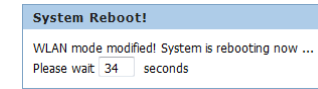
**AP Mode (Extend your Wired Network to allow wireless devices to connect your wired network using Wi-Fi)**

7. Ticks on **AP** checkbox.
8. Configure related parameters
9. Click on **Apply & Save** button.



10. Click on **OK** button.

11. WLAN mode modified! System is rebooting now ...Please wait 35 seconds. (If you don't see this screen pop up, just skip this step. This screen will pop up when you change the mode between Repeater and AP mode)



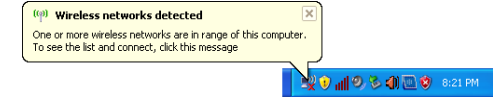
12. Please disconnect the Ethernet Cable from PC and connect it to the LAN port of xDSL/Cable Modem.

13. Now, the 11n Repeater has been configured completely, and suitable for Internet Connections.

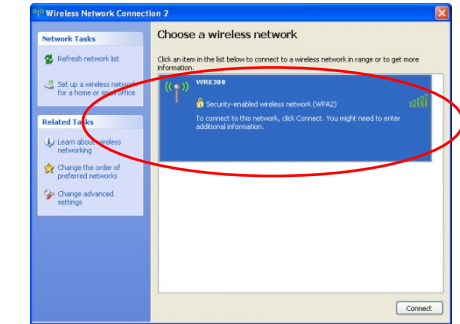
**STEP 5  
Connect Wirelessly**

For easy installation it is saved to keep the settings. You can later change the wireless settings via the wireless configuration menu.

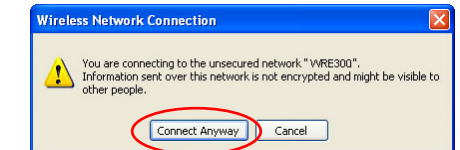
1. Double click on the wireless icon on your computer and search for the wireless network that you enter **SSID** name.



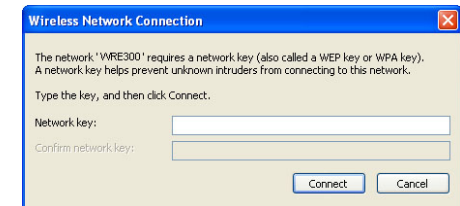
2. Click on the wireless network that you enter **SSID** name (the default settings **SSID = WRE300** which could be found on the bottom side of the device) to connect.



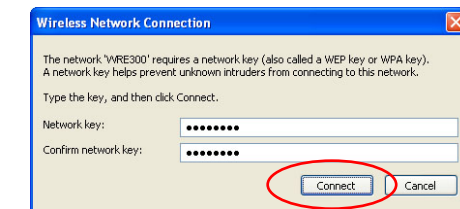
3. If the wireless network isn't encrypted, click on "Connect Anyway" to connect.



4. If the wireless network is encrypted, enter your own wireless password at least 8 characters for example 12345678 in the key field / Network key field / Confirm Network key field. You can later change this network key via the wireless configuration menu.



5. Click on "Connect" or "Apply".



Now, the 11n Repeater has been configured, and able to connect to ISP/ Website.