

System Requirements

1. Pentium 200MHz processor or above
2. Windows 98SE, Windows Me, Windows 2000, Windows XP, Windows Vista, Windows 7 and Windows 8.
3. 64MB of RAM or above.
4. 25MB free disk space

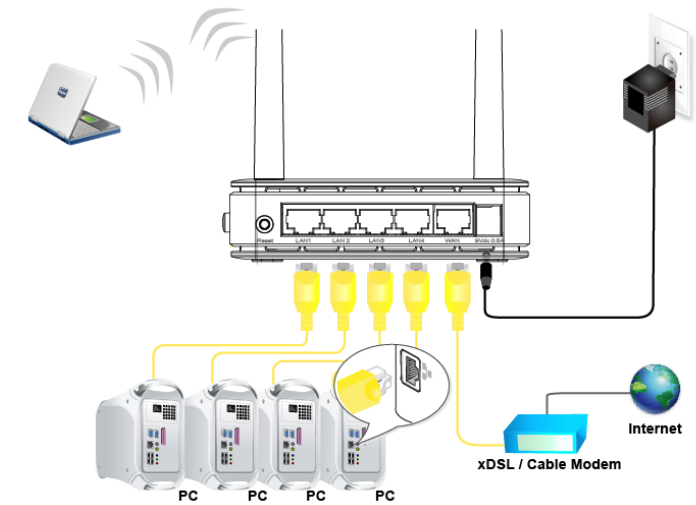
Package Content

1. 11n AP Router
2. Quick Installation Guide
3. Ethernet Cable (RJ-45)
4. Power Adaptor

Installation & Setup

Follow each STEP carefully and only go to the next step once you have completed the previous STEP.

STEP 1 Connection of 11n AP Router



- Step 1. Connect the Ethernet cable to WAN Port
Connect the RJ45 Ethernet cable from your xDSL/Cable Modem's Ethernet port to 11n AP Router's WAN Port.
- Step 2. Connect the Ethernet cable to LAN Port
Connect the supplied RJ45 Ethernet cable from your PC's Ethernet port to any of the 11n AP Router's LAN Port.
- Step 3. Attach the power connector
Connect the power adaptor to the power inlet **POWER** of your 11n AP Router.

LED Meaning

Your 11n AP Router has indicator lights on the Top side. Please see below for an explanation of the function of each indicator light.

- Power indicator
- Ethernet Active indicator
- Ethernet Active indicator
- Ethernet Active indicator
- Wireless Active indicator
- WPS Active indicator

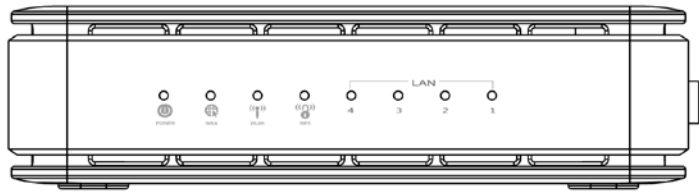
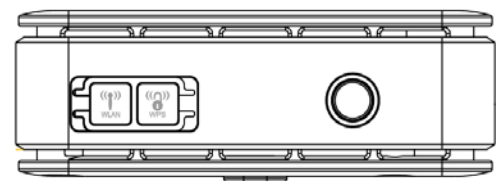


Table1. LED function

Label	Color	On	Flash	Off
	Green	Ready	Waiting for device ready	Power Off
	Green	Ethernet Connected	Transmit / Receive Data	No WAN IP address from xDSL / Cable Modem
	Green	Ethernet Connected	Transmit / Receive Data	Ethernet Disconnected
	Green	WLAN Ready	Transmit / Receive Data	WLAN Off
	Green	N/A	Start WPS pairing within 2 minutes	WPS Idle

Figure1. Right Panel of the 11n AP Router



Connectors

Table 2 shows the function of each connector and switch of the device.

Table 2. Function / Description of Connectors

Connector	Description
DC 9V	Connects to the supplied power adaptor
LAN	Connects the device via LAN Ethernet to a PC
WAN	Connects the device via WAN Ethernet to xDSL / Cable Modem
WLAN	Press this button for at least two full second to turn off/on wireless signals
WPS	WPS Press this button for 3,4,5 or 6 full seconds and the WPS LED will flash to start WPS. Now go to the wireless adapter or device and press its WPS button. Make sure to press the button within 120 seconds (2 minutes) after pressing the router's WPS button.
RESET	RESET Reset button. RESET the 11n AP Router to its default settings. Press this button for at least 7 full seconds to RESET device to its default settings.

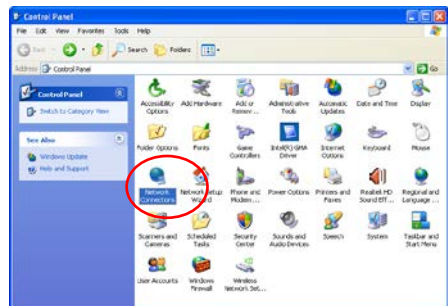
STEP 2

Configuration Procedures

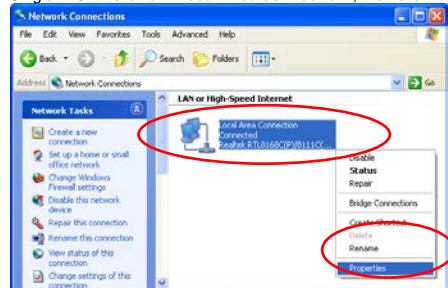
Before starting the 11n AP Router configuration, please kindly configure the PC computer as below, to have automatic IP address / DNS Server.

For Windows 98SE/ME/2000/XP

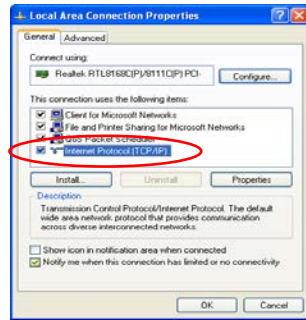
1. Click on "Start" -> "Control Panel" (in *Classic View*). In the Control Panel, double click on "Network Connections" to continue.



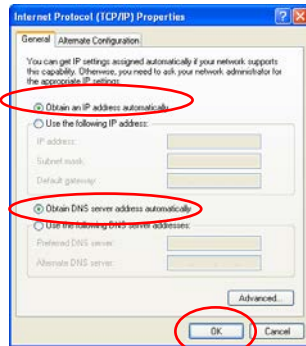
2. Single RIGHT click on "Local Area connection", then click "Properties".



3. Double click on "Internet Protocol (TCP/IP)".



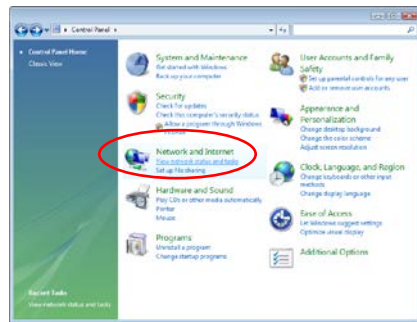
4. Check "Obtain an IP address automatically" and "Obtain DNS server address automatically" then click on "OK" to continue



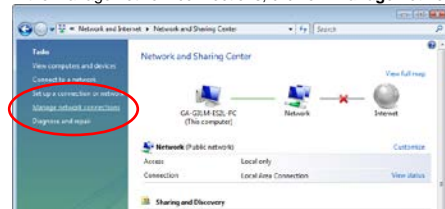
5. Click "Show icon in notification area when connected" (see screen image in 3. above) then Click on "OK" to complete the setup procedures.

For Windows Vista-32/64

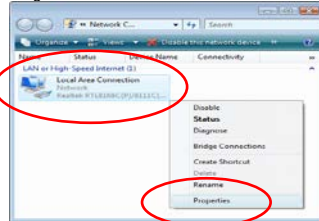
1. Click on "Start" -> "Control Panel" -> "View network status and tasks".



2. In the Manage network connections, click on "Manage network connections" to continue.

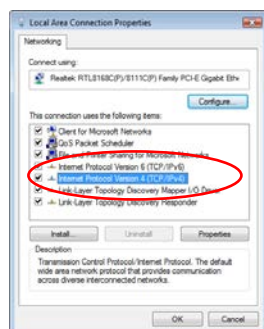


3. Single RIGHT click on "Local Area connection", then click "Properties".

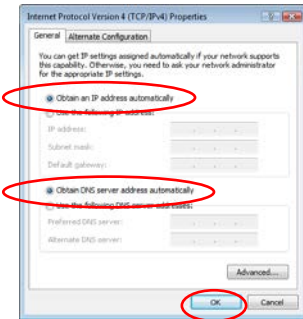


4. The screen will display the information "User Account Control" and click "Continue" to continue.

5. Double click on "Internet Protocol Version 4 (TCP/IPv4)".

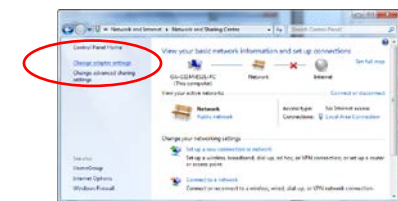


6. Check "Obtain an IP address automatically" and "Obtain DNS server address automatically" then click on "OK" to continue.

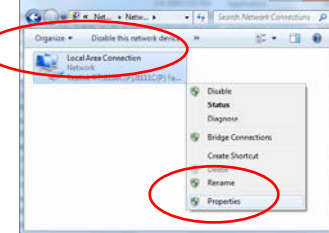


For Windows 7-32/64

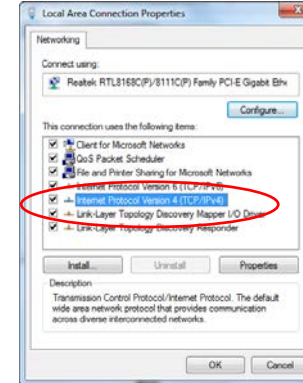
1. Click on "Start" -> "Control Panel" (in *Category View*) -> "View network status and tasks".



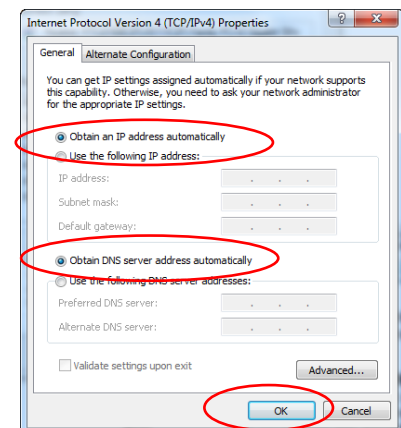
3. Single RIGHT click on "Local Area connection", then click "Properties".



4. Double click on "Internet Protocol Version 4 (TCP/IPv4)".



5. Check "Obtain an IP address automatically" and "Obtain DNS server address automatically" then click on "OK" to continue.

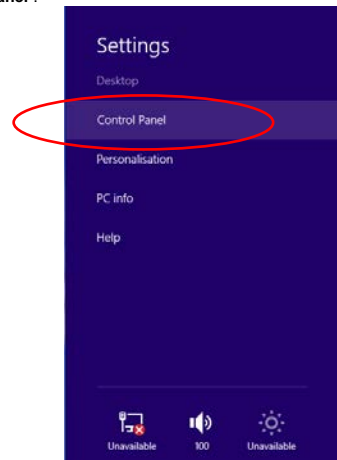


For Windows 8-32/64

1. Move the mouse or tap to the upper right corner and click on "Settings".



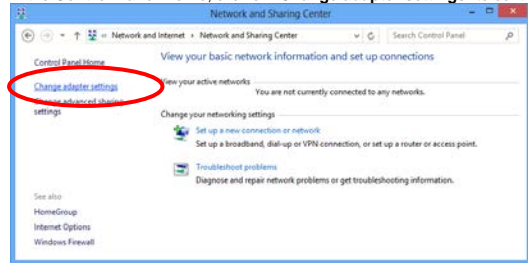
2. Click "Control Panel".



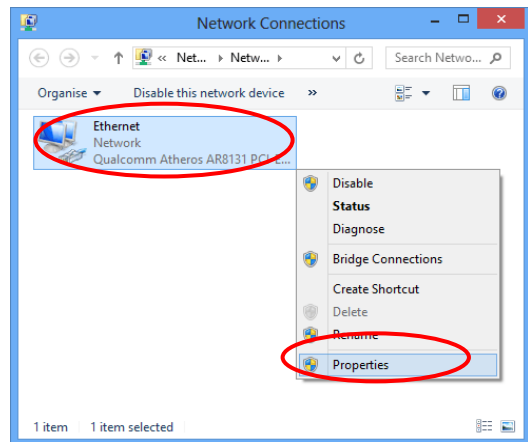
3. Click on "View network status and tasks".



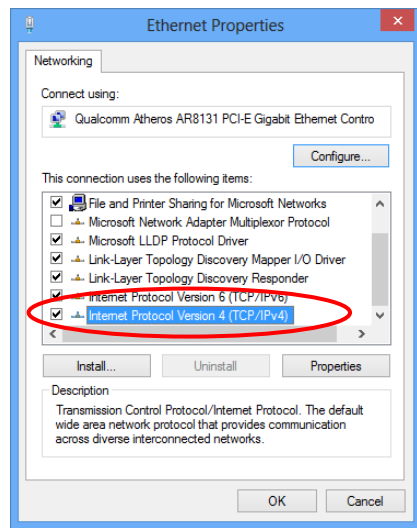
4. In the Control Panel Home, click on "Change adapter settings" to continue.



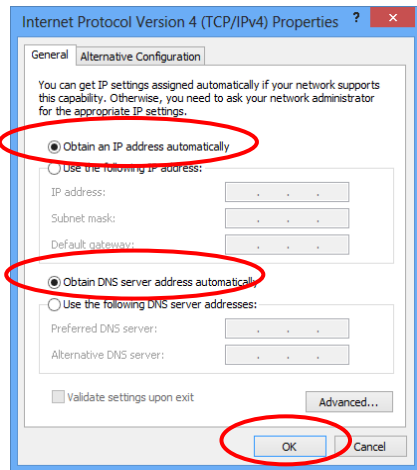
5. Single RIGHT click on "Ethernet", then click "Properties".



6. Double click on "Internet Protocol Version 4 (TCP/IPv4)".



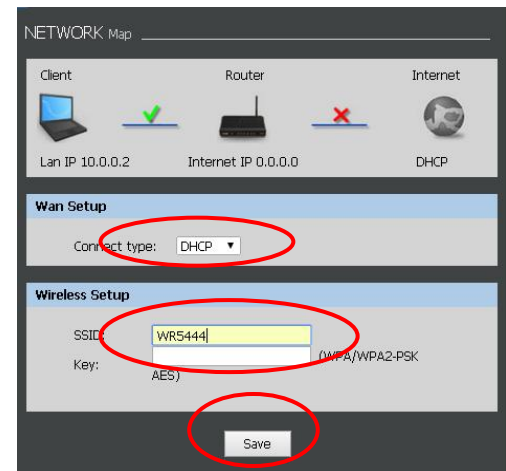
7. Check "Obtain an IP address automatically" and "Obtain DNS server address automatically" then click on "OK" to continue.



STEP 3

Advanced Configuration

- From any of the LAN computers connected to , launch your web browser, type the following URL in the web address (or location) box, and press [Enter] on your keyboard: <http://10.0.0.2>
- Select the Connect type **DHCP (Dynamic IP)**, **Static** or **PPPoE** and enter related parameters that your ISP (Internet Services Provider) or Network Administrator provided.
- Please enter the **SSID** if you want to change (the default settings **SSID = WR5444** which could be found on the bottom side of the device).
- Please enter your own wireless password at least 8 characters for example 12345678 in the **Key** field / **Network key** field (the **Encryption type = WPA/WPA2-PSK AES**).
- Click on **Save** button.

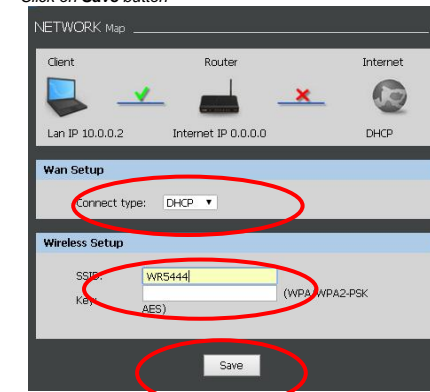


Examples

DHCP (Dynamic IP)

Select DHCP

Please enter the **SSID** if you want to change (the default settings **SSID = WR5444** which could be found on the bottom side of the device). Please enter your own wireless password at least 8 characters for example 12345678 in the **Key** field / **Network key** field (the **Encryption type = WPA/WPA2-PSK AES**). Click on **Save** button

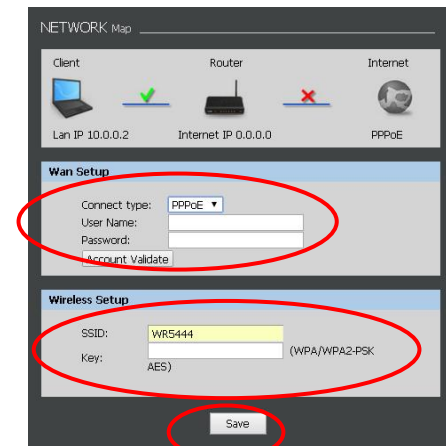


PPPoE

Select PPPoE

Enter **Username** and **Password** offered by the ISP

Please enter the **SSID** if you want to change (the default settings **SSID = WR5444** which could be found on the bottom side of the device). Please enter your own wireless password at least 8 characters for example 12345678 in the **Key** field / **Network key** field (the **Encryption type = WPA/WPA2-PSK AES**). Click on **Save** button

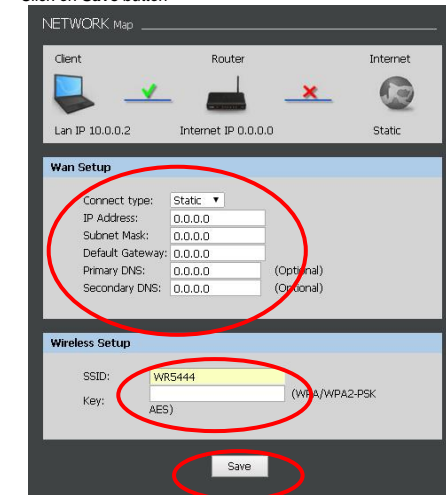


Static IP

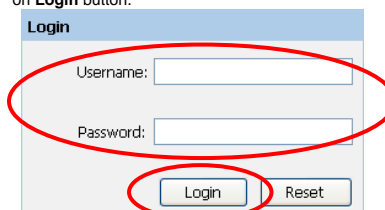
Select Static

Config **IP Address**, **Subnet mask**, **Default Gateway** and **DNS Server** offered by ISP (Internet Services Provider) or Network Administrator

Please enter the **SSID** if you want to change (the default settings **SSID = WR5444** which could be found on the bottom side of the device). Please enter your own wireless password at least 8 characters for example 12345678 in the **Key** field / **Network key** field (the **Encryption type = WPA/WPA2-PSK AES**). Click on **Save** button



6. Please enter the Login User Name: **admin** and Login Password: **administrator** and then click on **Login** button.



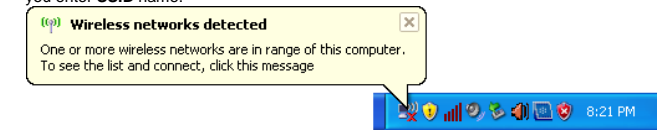
7. Now, the 11n AP Router has been configured completely, and suitable for Internet Connections.

STEP 4

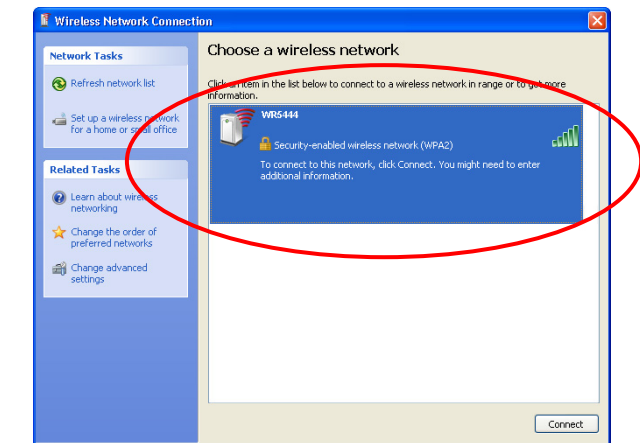
Connect Wirelessly

For easy installation it is saved to keep the settings. You can later change the wireless settings via the wireless configuration menu.

1. Double click on the wireless icon on your computer and search for the wireless network that you enter **SSID** name.



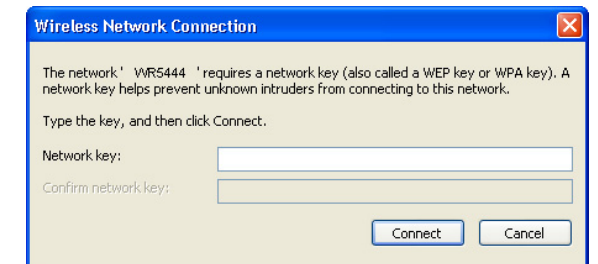
2. Click on the wireless network that you enter **SSID** name (the default settings **SSID = WR5444** which could be found on the bottom side of the device) to connect.



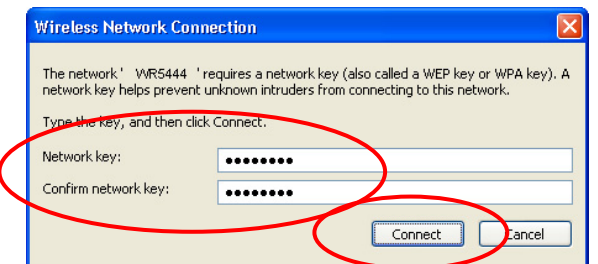
3. If the wireless network isn't encrypted, click on "Connect Anyway" to connect.



4. If the wireless network is encrypted, enter your own wireless password at least 8 characters for example 12345678 in the **key** field / **Network key** field / **Confirm Network key** field (the default settings **Security Mode = None**). You can later change this network key via the wireless configuration menu.



5. Click on "Connect" or "Apply".



Now, the 11n AP Router has been configured, and able to connect to ISP/ Website.