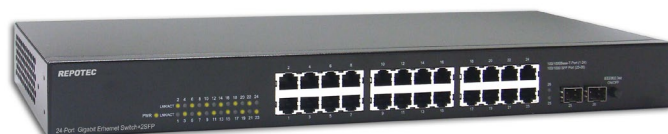


RP-G2602D

24-P + 2-SFP slot Gigabit Ethernet Switch



As a powerful, high-performance Gigabit Ethernet switch with 24 10/100/1000 Mbps ports, 2 SFP (mini GBIC) ports and one button to turn on and off the IEEE802.3az function, RP-G2602D provides you with a cost-effective and space-saving solution for expanding your network. The gigabit ports can lead you to a real gigabit connection, expediting the transference of larger and higher bandwidth-needed files in an easy way. With the two mini GBIC gigabit ports, you can add fiber-optic connectivity for connecting to other network switches to obtain long-distance communication.

Automatic MDI/MDI-X crossover detection ensures no need to worry about the cable type by automatically switching the port's receive and transmit connections with plugged in devices. Also, flow control ensures the correctness of data transmitting. Moreover, the 802.3x and backpressure flow control mechanisms work respectively for full and half duplex modes. Last but not least, the rich diagnostic LEDs on the front panel show the operating status of individual port and the whole system clearly.

With RP-G2602D, the access to reliable network is at your fingertips.

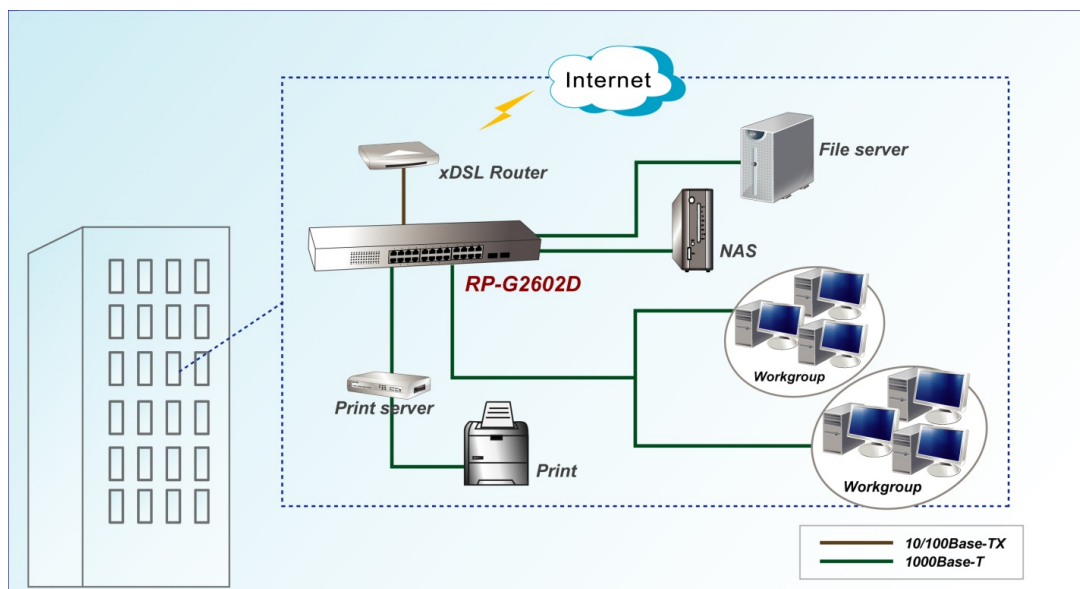
Features

- 24 ports gigabit non-blocking switch architecture.
- 2 SFP ports for optional fiber connection
- Push ON/OFF button to enable/disable IEEE802.3az
- Supports N-Way protocol for speed (10/100/1000Mbps) and duplex mode (Half/Full) auto-detection
- Supports MDI/MDI-X auto crossover and polarity correction
- Supports back-pressure (half duplex) and flow control (IEEE 802.3x)
- Store-and-forward architecture filters fragment & CRC error packets
- Supports 10K bytes jumbo frame
- Supports IEEE 802.3az Energy Efficient Ethernet
- Rack mountable

Specifications

Standards	<ul style="list-style-type: none"> • IEEE802.3,802.3u,802.3ab,802.3z • IEEE802.3x Flow Control • IEEE802.3az Energy Efficient Ethernet • IEEE802.1p Cos
Interface	<ul style="list-style-type: none"> • 24 x 10/100/1000Mbps RJ-45 ports • 2 x SFP ports • IEEE802.3az push button
Transmission Mode	<ul style="list-style-type: none"> • 10/100Mbps: Full-duplex(200mbps), Half-duplex(100mbps) • 1000Mbps: Full-duplex(2000mbps)
MAC Address Table	<ul style="list-style-type: none"> • 8K-entry look-up table with auto-learning function
Jumbo Frame	<ul style="list-style-type: none"> • 10K bytes
Buffer Memory	<ul style="list-style-type: none"> • 4.1M bit
LED Indications	<ul style="list-style-type: none"> • System: Power • Ports: Link/ACT
Power Supply	<ul style="list-style-type: none"> • Internal Power Supply 100~240VAC, 50~60Hz
Environment	<ul style="list-style-type: none"> • Operating Temperature: 0°C to 50°C • Operating Humidity:10% to 90% (Non-Condensing)
Dimension	<ul style="list-style-type: none"> • 441 * 131 * 44mm
Certification	<ul style="list-style-type: none"> • FCC, CE Class A, LVD EN60950-1

Application



Ordering information

RP-G2602D 24-P + 2-SFP slot Gigabit Ethernet Switch

REPOTEC CO., LTD.

3F., No.258, Liancheng Rd., Zhonghe District., New Taipei City 235, Taiwan
 TEL: 886-2-8227-1888 FAX: 886-2-8227-1818