

Chapter 1:

Introduction

This newly redesigned 5Port and 8Port 10/100 Switch can significantly increase your network traffic speed. A switch serves the same function as a hub in a network design tying your network equipment together. But unlike a simple-minded hub which divides the network's bandwidth among all the attached devices, a switch delivers full network speeds at each port. Installing this cost-effective 5Port and 8Port 10/100 Switch can potentially increase your network speed by five, eight times! It's the perfect way of integrating 10Mbps Ethernet and 100Mbps Fast Ethernet devices, too. All ports are auto speed negotiating, and have automatic MDI/MDI-X crossover detection, so you don't have to worry about the cable type. Each port independently negotiates for best speed and half- or full-duplex mode, for up to 200Mbps of bandwidth per port. Fast store-and-forward switching prevents damaged packets from being passed on into the network.

The new, ultra-compact case design is sure to fit into your workgroup environment. Let the 5, 8Port 10/100 Switch kick your 10/100 network into high gear.

Features

- Complies with the IEEE802.3 10Base-T Ethernet, IEEE802.3u 100Base-TX
- 5/8 ports 10/100Mbps TX Auto-Negotiation Ethernet Switch
- Full/Half-Duplex capability on every TX port
- Supports TP interface Auto MDIX function for auto TX/RX swap
- Automatic Source MAC Address Learning and Aging
- Supports Store & Forward architecture and performs forwarding and filtering
- Broadcast Storming Filter function
- IEEE802.3x flow control for Full-duplex
- Back Pressure function for Half-duplex operation
- Runt and CRC Filtering eliminates erroneous packets to optimize the network bandwidth
- Support to handle up to 1522 bytes packet
- LED indicators for simple diagnostics and management
- Plug and Play

Package

- One NWay switch
- One external power adapter
- User's manual

Chapter 2:

Hardware Description

This section describes the hardware Features of the 5/8 Port Switch. familiarize yourself with its display indicators, and ports. Front panel illustrations in this chapter display the unit LED indicators. Before connecting any network device to the Switch, read this chapter carefully.

Front Panel

The unit front panel provides a simple interface monitoring the Switch. It includes a power led and 5/8 led indicator for each port.

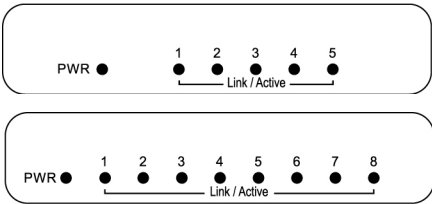


Figure of 5/8 Port Switch front panel

LED indicators

LED Function	Color	Description
PWR	Green	Lit: Power on
LNK/ACT	Green	Lit: Indicates the adapter is connected to switch Flash: Indicates data in or out the port

Rear Panel

The rear panel of the 5/8 Port Switch indicates 5/8 RJ-45 PORT.

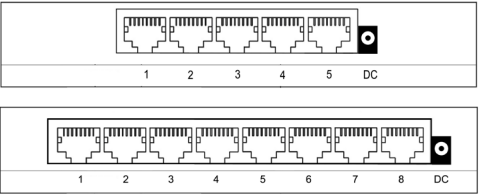


Figure of 5/8 Port Smart Switch rear panel

The 5/8Port Switch indicates a AC inlet, which accepts 100-240V 50-60Hz Power adapter.

Chapter 3:

Hardware Installation

- Place the Switch on a smooth surface
- Connect the output of power adapter to the DC-inlet of the Switch.
- Connect other IEEE802.3 compatible network device(Hub ,Switch ,PC) to one port of the Switch using Category 3/4/5 UTP/STP cabling.
- Connect another IEEE802.3 compatible network device (Hub , Switch ,PC) to another port of the Switch by following the same process as described in Step3.

Notice:
The cable distance between the Switch and other IEEE802.3 compatible network device should not exceed 100 meter. Make sure the wiring is correct
It can be used Category 3/4/5 cable in 10 Mbps operation. To reliably operate your network at 100Mbps, you must use an Unshielded/shielded Twisted-Pair (UTP/STP) Category 5 cable, or better Data Grade cabling. While a Category 3 or 4 cable may initially seem to work, it will soon cause data loss.
All kinds of IEEE802.3 compatible network device (Hub , Switch ,PC)can connect to the Switch by using straight-through wires or crossover wires because of Switch's auto MDIX function.

Chapter 4: Hardware Troubleshooting

This chapter contains information to help you solve problems. If the Switch is not functioning properly, make sure the Switch was set up according to instructions in this manual.

1. The Power LED is not lit
Solution:
 - a. Check if the DC power adapter is well connected. Try to unplug and plug back the power adapter to the LAN Switch or try another power adapter.
 - b. Check if the DC power source is in good condition.
2. The Link LED is not lit
Solution:
 - a. Make sure the Switch configuration is consistent with the connecting device
 - b. Check the cable connections.
 - c. Make sure the cable distance between the Switch and other IEEE802.3 compatible network device should not exceed 100 meter.
3. Performance is bad
Solution:
 - a. Check the full duplex status of the Ethernet Switching. If the Ethernet Switching is set to full duplex and the partner is set to half duplex, then the performance will be poor.
 - b. Make sure the cable between the switch and other IEEE802.3 compatible network device is Category 5 UTP at 100Mbps operation.
4. Some stations can not talk to other stations located on the other port
Solution:
 - a. Check status of the Link LED to make sure the link is correct.
 - b. Make sure that the workstation's network configuration is correct, modify the network configuration of workstation if need.
 - c. Please reset the switch if need.

Chapter 5: Specifications

- **Standard:**
IEEE802.3 10Base-T Ethernet
IEEE802.3u 100Base-TX Fast Ethernet
- **Network Media:**
100Base-TX – UTP/STP category 5 cable
10Base-T – UTP/STP category 3 or 5 cable
- **Connector:** STP RJ-45 port for 10/100Mbps TX
- **LED indicators:**
System – Power LED.
Individual port – link/activity LEDs
- **Dimension:** 160mm(L) x 83mm(W) x 26mm(H)
- **Temperature:**
Operating – 0°C to 45°C
Storage – -20°C to 70°C
- **Humidity:**
Operating – 10% to 90% RH
Storage – 5% to 90% RH
- **Input Power Requirement:** 100 - 240VAC, 50 – 60Hz
- **Certification:** FCC Part 15 Class A, CE



(P/N: 41NE-170508KB-A04)

5/8-port 10/100Mbps Nway Fast Ethernet Switch

User Manual