

RP-WUP211

1-USB2.0 Wireless-n Print Server with 1LAN



RP-WUP211 Print Server enables seamless printer sharing over WiFi or wired LAN. Share standard USB printers wirelessly or through a wired connection. Compatible with various wireless standards and features an RJ45 port for wired connectivity.

Enjoy the convenience of printer placement anywhere with network access. Avoid purchasing individual printers for each area. RP-WU211 supports SNMP for remote printer management and warning notifications. Access the server through the embedded web interface and use the Windows-based PSAdmin utility for easy setup.

Connect to your wireless network quickly with the WPS button. Perfect for mixed environments with USB 2.0 compatibility. Simplify printer sharing with the RP-WUP211 Wireless-N USB Print Server. Experience effortless connectivity, flexible placement, and streamlined management.

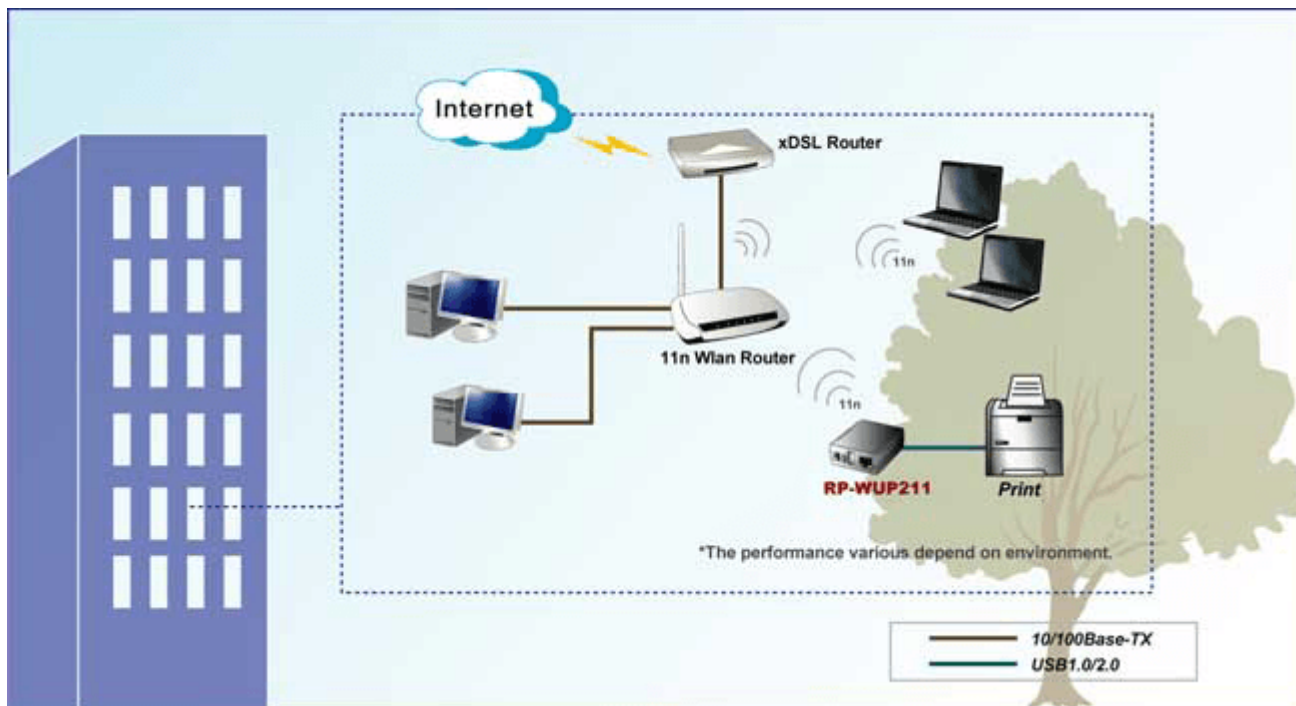
Features

- Wireless-N USB Print Server: Share printers over WiFi.
- Wired LAN Connection: RJ45 port (10/100 Mbps).
- Compatibility: Supports most wireless standards.
- Excludes Host-based Printers: CAPT, GDI, PPA not supported.
- SNMP Support: Remote printer management and warnings.
- Embedded Web Server: Configure via web browsers.
- Windows-based PSAdmin Utility: Easy setup.
- WPS Button: Quick wireless network connection.
- USB 2.0 Compatibility: Suitable for mixed environments.

Specifications

Standards	<ul style="list-style-type: none"> • IEEE802.3(10BaseT Ethernet) • IEEE802.3u(100Base Fast Ethernet) • USB2.0 high speed compliant port • Complies with IEEE 802.11b/g/n standard
Interface	<ul style="list-style-type: none"> • 1* USB 2.0 (High speed), supporting 1.5Mbps (low speed) and 12Mbps (full speed) data transmission rate. • 1* 10/100Mbps RJ-45 (UTP) connector
Antenna	<ul style="list-style-type: none"> • Antenna on board
Reset Button	<ul style="list-style-type: none"> • Built-in Reset Button
WPS Button	<ul style="list-style-type: none"> • Built-in WPS Button
CPU	<ul style="list-style-type: none"> • ARM-based SoC
Flash	<ul style="list-style-type: none"> • 1Mbytes
System Memory	<ul style="list-style-type: none"> • 8Mbytes SDRAM
Network Protocol Management	<ul style="list-style-type: none"> • TCP/IP, IPX, NetBEUI, AppleTalk, LPR, SMB over IP • Web interface • Windows-based Setup Program
Software Upgradeable	<ul style="list-style-type: none"> • Web interface • Windows-based Setup Program
Radio Frequency	<ul style="list-style-type: none"> • 2.4Ghz ISM Band
MAC Method	<ul style="list-style-type: none"> • CSMA/CA with ACK
Security	<ul style="list-style-type: none"> • WEP64/128, WPA/WPA2-PSK
Modes	<ul style="list-style-type: none"> • Ad-Hoc and Infrastructure
Data Transfer Rate	<ul style="list-style-type: none"> • 1, 2, 5.5, 6, 9, 11, 12, 18, 24, 36, 48, 54, 108Mbps
Output Power	<ul style="list-style-type: none"> • 15 ~ 20dBm
Wireless Security	<ul style="list-style-type: none"> • WEP(64bit/128bit) and WPA/WPA2
LED	<ul style="list-style-type: none"> • Status/Power, USB, Wireless
Network Operating System	<ul style="list-style-type: none"> • Windows 95/98/Me/NT/2000/XP/2003/Vista/7/10 up
Power Supply	<ul style="list-style-type: none"> • External power adapter 5V 2A
Environment	<ul style="list-style-type: none"> • Operating Temperature: 0°C~50°C • Operating Humidity: 0%~70%
Dimension	<ul style="list-style-type: none"> • 72.6 * 60 * 25 mm
Certifications	<ul style="list-style-type: none"> • FCC, CE

Application



Ordering information

RP-WUP211 1-USB2.0 Wireless-n Print Server with 1LAN (Antenna on board)