

Network USB over IP Server

With 1-USB2.0 Port

Quick Installation Guide



Version 1.0
April. 2013

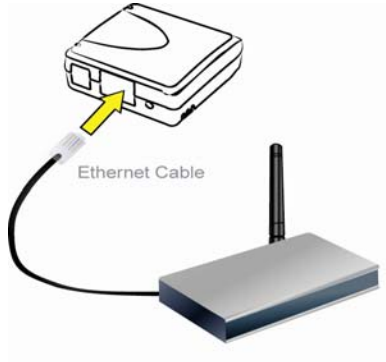
Before you start, you should prepare:

- One Windows XP, Vista, 7 or 8 computer with CD-ROM drive
- The USB device(s) with USB port

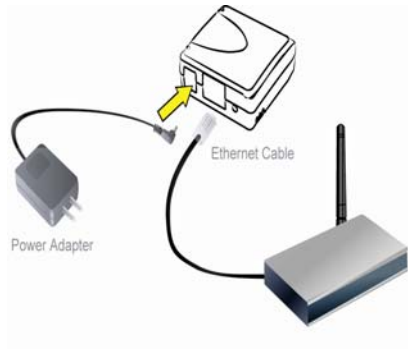
Hardware Installation

Make sure that your USB devices are switched off and that the Network USB over IP Server's power adapter is disconnected.

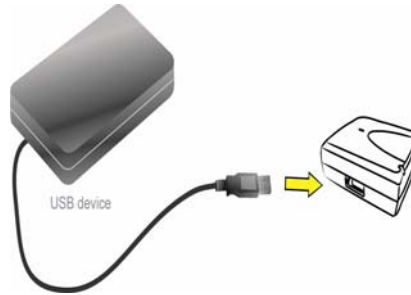
1. Connect the Network USB over IP Server to the router or switch/HUB with the Ethernet cable.



2. Connect the power adapter to the Network USB over IP Server. When the Link LED lights up, the Network USB over IP Server is correctly connected to the network.



3. Connect your USB device to the USB port of the Network USB over IP Server.



Software Installation

1. Insert the setup CD into your computer. A welcome screen should appear with a menu of options, including the option to install the proper Network USB over IP Server software, access the User Manual, or Exit out of the welcome menu.



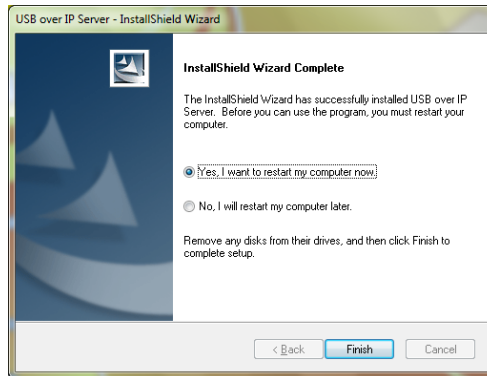
2. For Windows XP Users, the installation wizard will start the installation process. During the installation, a Windows security message will appear. Select "Continue Anyway" to continue.



For Windows Vista, 7 or 8 Users, the installation wizard will start the installation process. During the installation, a Windows Security message will appear. Select **"Install"** to continue. For security reason, if you use utility on public network, please select those options to keep your environment are protect.



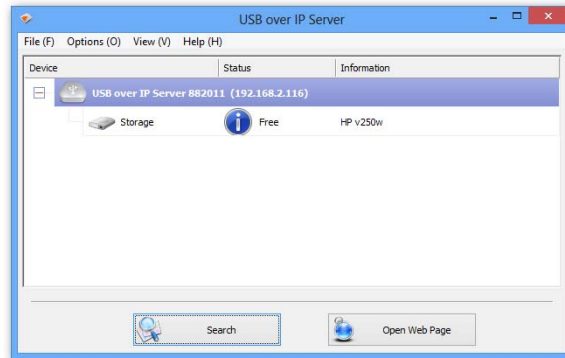
3. When the installation completed, select **"Yes, I want to restart my computer now"** and click **"Finish"** to close the installation wizard.



- When prompted, restart your computer. After rebooting, you will see a new icon on your desktop. Double-click the icon and it will bring up the Network USB over IP Server setup utility.

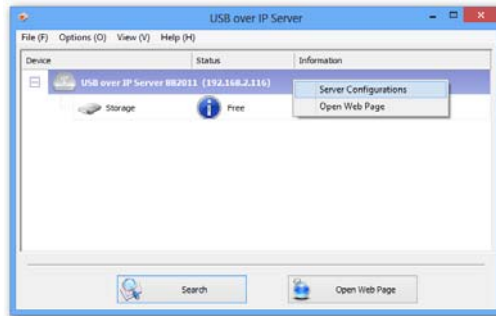


- The setup utility will show up and display all the active Network USB over IP Server on your network. In this screen, you will see the product listed as **"USB over IP Server 882011 (192.168.2.116)"**. The **"882011"** is the last 6 digits of the Network USB over IP Server's MAC address, and the **"192.168.2.116"** is the Network USB over IP Server's IP address.

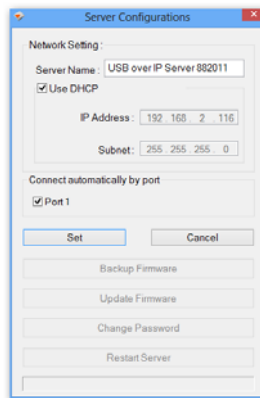


Setting the Network USB over IP Server by Setup Utility

1. To configure the Network USB over IP Server by setup utility, right-click on the USB over IP Server and select **"Server Configurations"**.

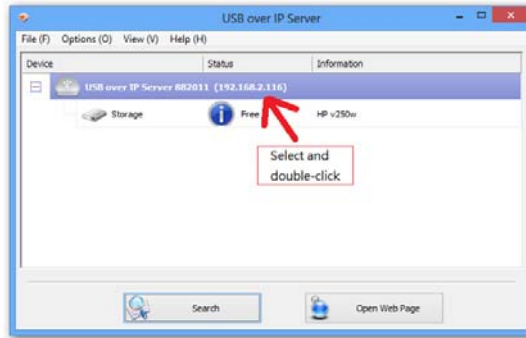


2. A Server Setting window will be displayed. You may set the DHCP (default), IP address and password. Moreover, you can upgrade the firmware and reboot the Network USB over IP Server.



WEB Management Interface

To Access WEB management interface in Windows XP, Vista , 7 or 8 in the USB over IP Server setup utility, select and double-click the "USB over IP Server 882011 (192.168.2.116)" item, the operating system will open the browser automatically and load the management webpage.



ZR42011Q-000