

RP-2803

3-P Fast Ethernet Print Server



RP-2803 Print Server offers a streamlined solution for printer sharing on the network.

Equipped with 3*Parallel interfaces, easily share printers on the Ethernet network without PC connections. Benefit from SNMP support for remote printer management and warning notice sending.

Effortlessly access and control the print server through the embedded web server. Enjoy the convenience of the Windows-based PSAdmin utility for easy setup across various operating systems. Upgrade your printing infrastructure with the RP-2803 Print Server and experience simplified printer sharing and efficient management.

Simplify printer sharing and management with the RP-2803 Print Server. Share printers without PC connections using 3*Parallel interfaces. SNMP support enables remote management and warning notice sending. Access and control the server through the embedded web interface. Enjoy easy setup across different operating systems with the Windows-based PSAdmin utility. Upgrade your printing experience with the RP-2803 Print Server.

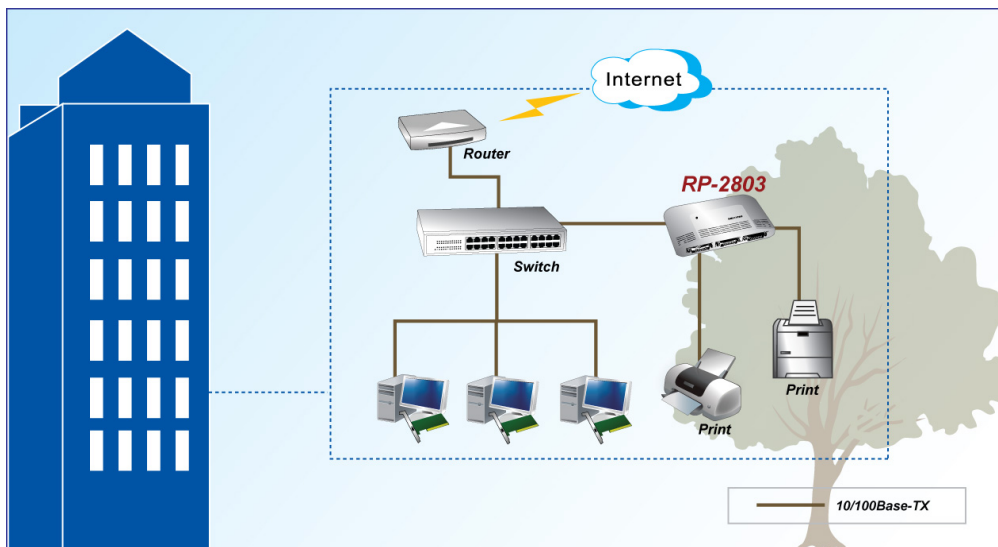
Features

- 3*Parallel interfaces for easy printer sharing on the Intranet/Internet.
- Convenient printer placement and direct connection to the Ethernet network.
- No need for printer connection with a PC.
- Simple Network Management Protocol (SNMP) support for remote printer management.
- Permanent SNMP agent for seamless access and control of print servers.
- Compatibility with standard SNMP-based applications for easy management.
- Embedded web server for convenient access and configuration via web browsers.
- Windows-based PSAdmin utility for simplified setup across various operating systems.
- Support for Netware, Windows, Mac, and Linux systems.

Specifications

Standards	<ul style="list-style-type: none">• IEEE802.3 10BASE-T, IEEE802.3u 100BASE-TX
Interface	<ul style="list-style-type: none">• 3* DB-36-pin male Centronics port• 1 * RJ-45 10/100M port
Hardware	<ul style="list-style-type: none">• ARM7-based processor• Flash: 1MB, System memory: 2MBytes SDRAM
OS Support	<ul style="list-style-type: none">• Microsoft Windows, Apple Mac OS , Unix/Linux, Novell NetWare
Protocol Support	<ul style="list-style-type: none">• IPX, TCP/IP, NetBEUI, AppleTalk, SNMP (management), SMB.
Management	<ul style="list-style-type: none">• Web interface• Windows-based Setup Program
Default IP Address	<ul style="list-style-type: none">• 192.168.0.10; DHCP: off
Software Upgradeable	<ul style="list-style-type: none">• Web interface, TFTP• Window-based Setup Program
LED Indicators	<ul style="list-style-type: none">• Power/Status: Red• LAN Link: Yellow for 10Mbps, Green for 100Mbps
Reset Button	<ul style="list-style-type: none">• Yes. (Reset, Load factory defaults, Port 1 self test page)
Power Adapter	<ul style="list-style-type: none">• External power Adapter DC 5V, 2A
Environment	<ul style="list-style-type: none">• Operating Temperature: 0°C~50°C• Operating Humidity: 0%~70%
Dimension	<ul style="list-style-type: none">• 228 * 137 * 36 mm
Certifications	<ul style="list-style-type: none">• FCC, CE

Application



Ordering information

RP-2803

3-P Fast Ethernet Print Server