



RP-2801

1-P Print Fast Ethernet Server

Streamline network printing with the RP-2801 Print Server. Share printers on Intranet/Internet using the 1*Parallel interface.

Cut costs by avoiding individual printers for each workstation. Ideal for education and

government institutions. RJ45 port enables 10/100 Mbps wired connections for reliable printing.

Effortlessly manage print servers using the standard SNMP agent. Access and configure the server via the embedded web server. Windows-based PSAdmin utility facilitates easy setup for various operating systems. Upgrade your printing efficiency with the RP-2801 Print Server.

Simplify printer sharing, reduce costs, and enhance printing management. Experience a seamless network printing solution with the RP-2801 Print Server. Ideal for education and government institutions, it offers reliable wired connections and supports multiple operating systems. Upgrade your printing infrastructure and optimize efficiency with ease.



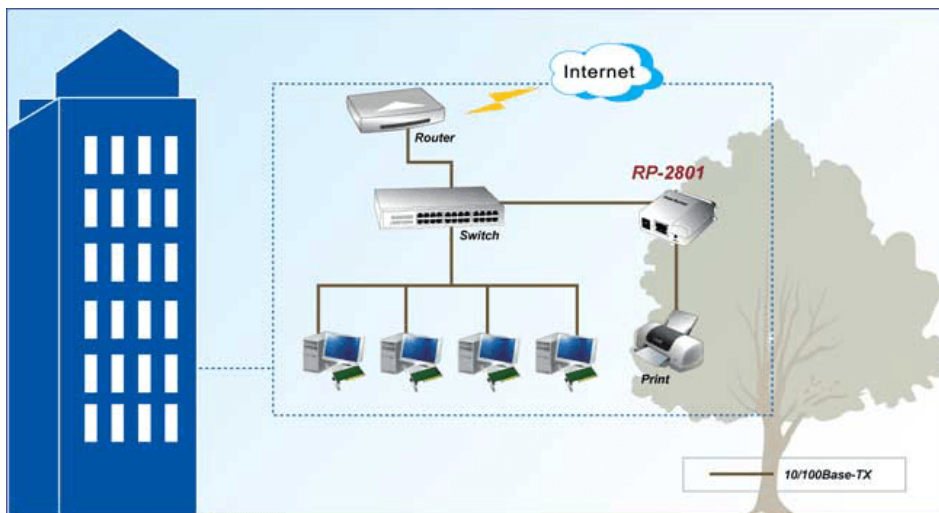
Features

- 1*Parallel interface for easy printer sharing on Intranet/Internet.
- Cost savings by sharing a single printer among multiple network-connected computers.
- RJ45 port supporting 10/100 Mbps wired connections for reliable network printing.
- Standard SNMP agent for effortless access and management of print servers.
- Embedded web server for convenient configuration and control via web browsers.
- Windows-based PSAdmin utility for easy setup across various operating systems.
- Supports printing with host-based printers (CAPT, GDI, PPA) and multi-function printers.
- Enhances printing efficiency and placement flexibility on the Ethernet network.
- Convenient network printing solution for education and government institutions.
- Simplifies printing management, reducing the need for individual printers in workstations.

Specifications

Standards	<ul style="list-style-type: none"> • IEEE802.3 10BASE-T, IEEE802.3u 100BASE-TX
Interface	<ul style="list-style-type: none"> • 1 * DB-36-pin male Centronics port, supporting bi-directional • 1 * RJ-45 10/100M port
Hardware	<ul style="list-style-type: none"> • ARM7-based processor • Flash: 1MB, System memory: 2MBytes SDRAM
OS Support	<ul style="list-style-type: none"> • Microsoft Windows, Apple Mac OS, Unix/Linux, Novell NetWare
Protocol Support	<ul style="list-style-type: none"> • IPX, TCP/IP, NetBEUI, AppleTalk, SNMP (management), SMB
Management	<ul style="list-style-type: none"> • Web interface • Windows-based Setup Program
Default IP Address	<ul style="list-style-type: none"> • 192.168.10; DHCP: off
Software Upgradeable	<ul style="list-style-type: none"> • Web interface • Window-based Setup Program, TFTP
Led Indicator	<ul style="list-style-type: none"> • Power/Status: Orange • LAN Link: Yellow for 10Mbps, Green for 100Mbps
Reset Button	<ul style="list-style-type: none"> • Yes. (Reset, Load factory defaults, Self test page)
Power Adapter	<ul style="list-style-type: none"> • External power Adapter DC3.3V, 2A
Environment	<ul style="list-style-type: none"> • Operating Temperature: 0°C ~ 50°C • Operating Humidity: 0% ~ 70%
Dimension	<ul style="list-style-type: none"> • 55.5 * 52 * 22 mm
Certifications	<ul style="list-style-type: none"> • FCC, CE

Application



Ordering information

RP-2801 1-P Print Fast Ethernet Server

REPOTEC CO., LTD.

3F., No.258, Liancheng Rd., Zhonghe District., New Taipei City 235, Taiwan
 TEL: 886-2-8227-1888 FAX: 886-2-8227-1818