

RP-PG082

8-P PoE + 2-SFP Gigabit Ethernet Switch



RP-PG082 is a 8-Port Gigabit Power over Ethernet Switch with 2 SFP slots, it provides users Gigabit Ethernet and power via CAT 5 and above twisted cables.

RP-PG082 complies with IEEE 802.3af and 802.3at standards and supplies up to 30W per port, with a total PoE power budget of 120W. Its auto-negotiate is between 10/100/1000 Mbps network speed and duplex. By integrating the data transmitting and power supply, it eliminates the toil of constructing your network. Users can easily connect a Wireless AP or a VoIP phone to this switch without arranging outlets for the wall, ceiling or any unreachable place.

To ensure the power supply safety, RP-PG082 supports current protection and circuit shorting protection. Moreover, front panel LEDs provides quick indication of connection speed and status.

Plug-and-play function without any software to configure and is also fully compliant with all kinds of network protocols.

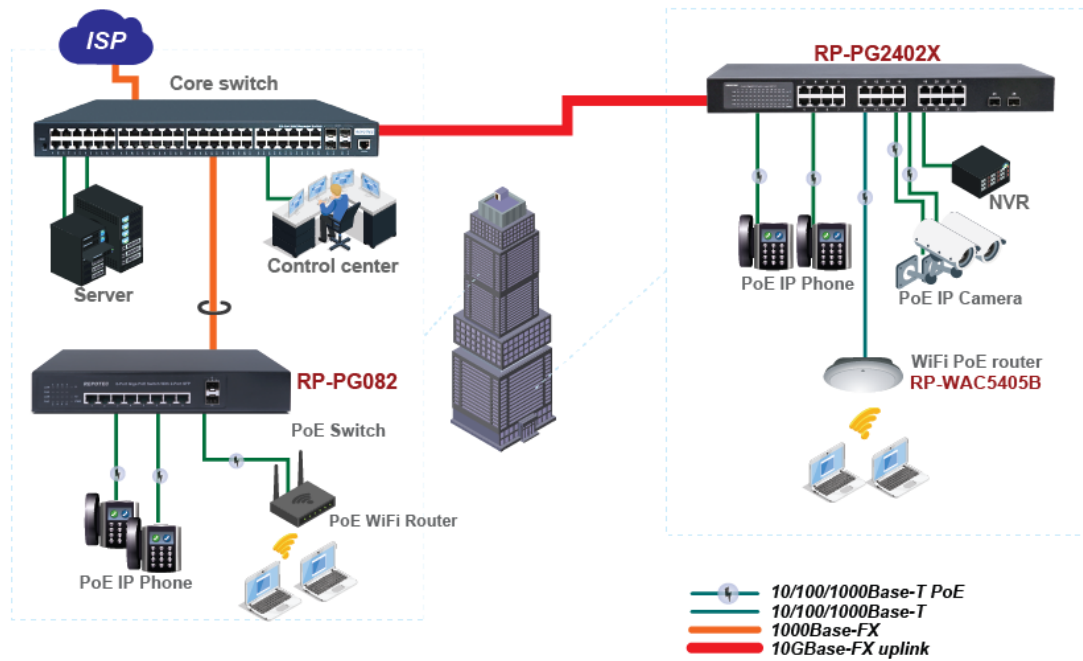
Features

- Comply with IEEE 802.3 at/af PoE standard
- 30W PoE per port, 120W in total
- Support over current protection and circuit shorting protection
- Support 10/100/1000Base-T applications
- Support 1000Mbps SFP Fiber Module Auto Detection
- Support MDI/MDI-X auto crossover
- Support extensive LED indicators for network diagnostics
- Wire-speed packet filtering and forwarding rate
- Store-and-forward architecture filter fragment & CRC error packets
- Supply suitable power to PoE PD terminals
- Safe and reliable power to WLAN APs
- Automatic Detection and Protection of Non-standard Ethernet Terminals
- AC-in Internal Power

Specifications

Standards	<ul style="list-style-type: none"> • IEEE 802.3 10 BASE-T • IEEE 802.3u 100 BASE-TX • IEEE 802.3ab 1000Base-T • IEEE 802.3z 1000Base-X Ethernet • IEEE 802.3x Flow Control capability • IEEE 802.3at/af Power Over Ethernet
Interface	<ul style="list-style-type: none"> • 8 x 10/100/1000Mbps RJ-45 ports • 2 x 1000Mbps SFP slots
Switch Capacity	<ul style="list-style-type: none"> • 16Gbps
MAC addresses	<ul style="list-style-type: none"> • 8K
Jumbo frame	<ul style="list-style-type: none"> • up to 9K
Filtering/Forwarding Rates	<ul style="list-style-type: none"> • 1000Mbps port - 1,488,000pps • 100Mbps port - 148,800pps • 10Mbps port - 14,880pps
Transmission Media	<ul style="list-style-type: none"> • 10BaseT Cat. 3, 4, 5 UTP/STP • 100BaseTX Cat. 5 UTP/STP • 1000BaseTX Cat. 5E/6/7 UTP/STP
PoE Specification	<ul style="list-style-type: none"> • PD classification identify • PoE over current protection • PoE circuit sorting protection • PoE power on RJ-45 pin 1,2 for power + / pin 3,6 for power -
PoE Power Budget	<ul style="list-style-type: none"> • Per PoE port 30 W • Max. 120W
LED Indicators	<ul style="list-style-type: none"> • Power (Green), LAN (1000Mbps-Green;10/100Mbps-Amber), PoE (Green), SFP (Green)
Power Supply	<ul style="list-style-type: none"> • Internal Power Supply 100~240VAC, 50/60 Hz, 56V
Environment	<ul style="list-style-type: none"> • Operating temperature : 0°C to 40°C • Operating Humidity: 5% to 90% (Non-Condensing)
Dimension (WxHxD)	<ul style="list-style-type: none"> • 280 x 44 x 122 mm
Certification	<ul style="list-style-type: none"> • FCC, CE

Application



Ordering information

RP-PG082 8-P Gigabit + 2-SFP PoE Switch (120W)