



## RP-G2804IXS

### 24-P Gigabit + 4-SFP+ (1G/10G) L2+ Managed Stackable Switch



RP-G2804IXS is a 28-port Managed Gigabit Stackable Switch which delivers 24 (10M/100M/1G) RJ45 ports, 4-SFP+ (1G/10G) slot and DB9 console port.

RP-G2804IXS supports remote management by SNMP, Http and Telnet interfaces, and local management by console interface. It offers full suite of comprehensive Layer 2 switching capabilities such as 802.1Q VLAN, 802.1x Port Security, Rate Control, Port Configuration, Port Mirroring, Port Statistics, QoS functions. The switch provides the ideal combination of affordability and capabilities for small- and medium-size businesses to build high-performance network efficiently.

RP-G2804IXS supports stacking function, it can define 2 of 10G SFP+ ports for stacking with other RP-G2804IXS. Up to 16 units, 384 Gigabit TP ports and 32 10Gbps SFP+ slots can be managed by a stacking group and added ports and functionality as needed.

RP-G2804IXS equips 4 10GbE connectivity, with 10 GbE uplink, the switch can handle extremely large amounts of data in a secure topology connecting to an enterprise backbone or high capacity servers.

## Features

- 2 SFP+ Stacking Port up to 16 device in a Ring or Chain topology
- Jumbo Frame
- out-band console and in-band SNMP/Http/Https/Telnet management interface
- IPv4/IPv6 management
- 8 priority queues are supported on each port for QoS application
- Port-based VLAN, 802.1Q VLAN and Voice VLAN
- Protected port and LoopBack Detection function
- Q-in-Q(double tagging) function
- IEEE 802.1x security function, and VLAN assignment, Guest VLAN functions
- Static Mac address access limit and Dynamic Mac address number on port
- IEEE802.1d & 802.1w & 802.1s
- IP Multicast with IGMP snooping / query / fast leave / filtering /group limited /MVR
- DHCP Client / DHCP Option 82 Relay / DHCP Snooping function
- ACL function for L2 ~ L4 packet control
- Ingress/Egress rate control on port
- Broadcast/Multicast/Unicast storm control
- ARP inspection
- IP source guard
- RMON 1,2,3,9
- SFP Transceiver DDMI function
- Remote port configuration setting and statistics monitoring
- Text configuration download and upload

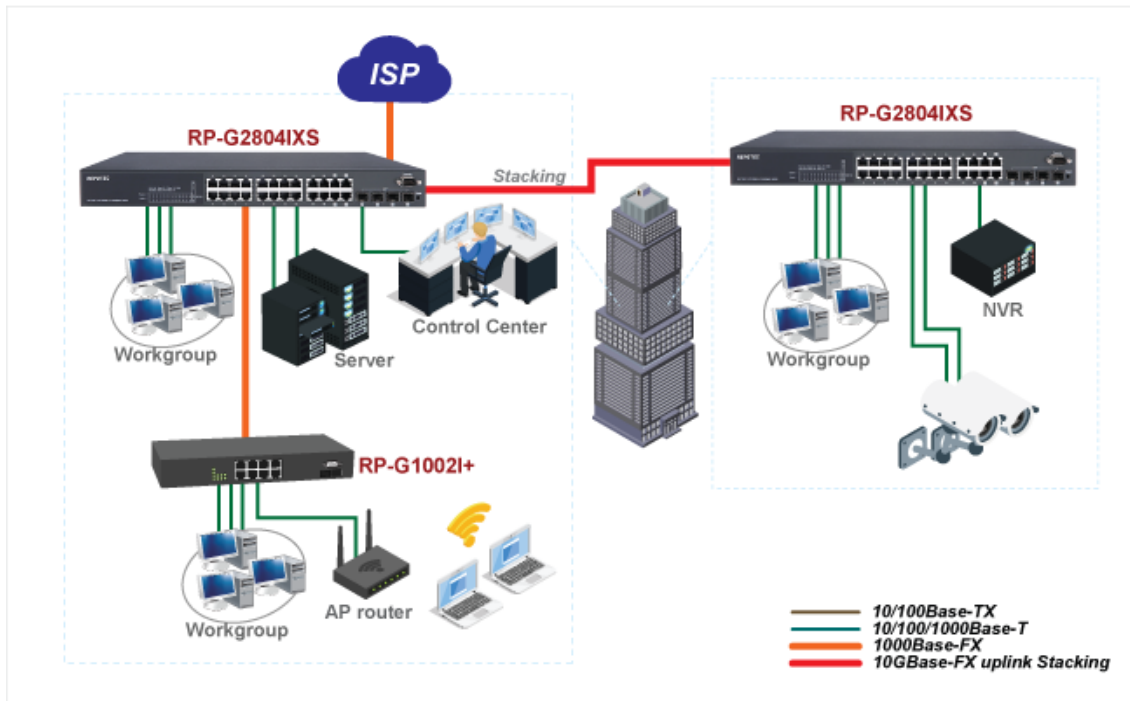
- IEEE 802.3az power management

## Specifications

<b>Standards</b>	<ul style="list-style-type: none"> <li>• IEEE 802.3 10Base-T Ethernet</li> <li>• IEEE 802.3u 100Base-TX Ethernet</li> <li>• IEEE 802.3ab 1000Base-T Ethernet</li> <li>• IEEE 802.3z 1000Base-X Ethernet</li> <li>• IEEE 802.3x Flow Control capability</li> <li>• IEEE802.3az Energy Efficient Ethernet</li> </ul>
<b>Interface</b>	<ul style="list-style-type: none"> <li>• Port1-24: 24* RJ45 ports, with 10/100/1000Mbps, Full/Half duplex auto-negotiation and Auto-MDIX and Force MDI/MDIX function</li> <li>• Port25-28: 1G/10G SFP+ slots</li> </ul>
<b>Console Port</b>	<ul style="list-style-type: none"> <li>• DB9 console port</li> </ul>
<b>Memory</b>	<ul style="list-style-type: none"> <li>• Flash: SPI 16M Bytes , RAM:DDRII 128M Bytes</li> </ul>
<b>Packet Buffer</b>	<ul style="list-style-type: none"> <li>• 4M Bytes</li> </ul>
<b>MAC Table Size</b>	<ul style="list-style-type: none"> <li>• 32K</li> </ul>
<b>Max Packet Size</b>	<ul style="list-style-type: none"> <li>• 10K Bytes</li> </ul>
<b>Switch capacity</b>	<ul style="list-style-type: none"> <li>• 128Gbps</li> </ul>
<b>Forwarding Rate</b>	<ul style="list-style-type: none"> <li>• 95.232Mpps</li> </ul>
<b>Port Control</b>	<ul style="list-style-type: none"> <li>• Port speed, duplex mode, and flow control</li> <li>• Port Auto MDI/MDI-X</li> <li>• Port frame size (jumbo frames), Maximum ingress frame size (10056 bytes)</li> <li>• Port state (administrative status)</li> <li>• Port status (link monitoring)</li> <li>• Port statistics (MIB counters)</li> </ul>
<b>Stacking</b>	<ul style="list-style-type: none"> <li>• 2 SFP+ slots Stacking Port</li> <li>• 40Gbps full duplex Bandwidth</li> <li>• Single IP address Management</li> <li>• Stacking of up to 16 device in a Ring or Chain topology</li> <li>• QoS consistency across stack</li> <li>• Mirroring across stack</li> <li>• Link aggregation groups spanning multiple switches in a stack</li> <li>• Hardware-assisted learning with MAC table synchronization across stack</li> </ul>
<b>L2 Switching</b>	<ul style="list-style-type: none"> <li>• Auto MAC address learning/aging and MAC addresses (static)</li> <li>• DHCP snooping</li> <li>• ARP inspection</li> <li>• Port Mirroring</li> <li>• Flow mirroring</li> </ul>
<b>L3 Switching</b>	<ul style="list-style-type: none"> <li>• DHCP option 82 relay</li> <li>• IPv4 Unicast: Static routing</li> </ul>
<b>VLANs</b>	<ul style="list-style-type: none"> <li>• IEEE 802.1Q static VLAN(4096 entries Max.), Voice VLAN,</li> <li>• Port isolation, Private VLAN Static, MAC based VLAN,</li> <li>• Protocol based VLAN, IP subnet based VLAN</li> </ul>
<b>Spanning Tree</b>	<ul style="list-style-type: none"> <li>• IEEE 802.1s MSTP(Multiple spanning tree)</li> <li>• IEEE 802.1w RSTP(Rapid spanning tree)</li> <li>• IEEE 802.1D STP(Spanning tree)</li> <li>• BPDU Guard &amp; Restricted Role</li> <li>• Error Disable Recovery</li> </ul>
<b>Link Aggregation</b>	<ul style="list-style-type: none"> <li>• Static and LACP</li> <li>• 14 groups Max. and 8 ports per group</li> </ul>
<b>IP Multicast</b>	<ul style="list-style-type: none"> <li>• IGMP v1, v2 and v3 snooping(1024 multicasts groups)</li> <li>• MLD v1 snooping</li> </ul>

	<ul style="list-style-type: none"> <li>● IGMP filtering profile</li> <li>● IPMC throttling, filtering, leave proxy</li> <li>● MVR and MVR profile</li> </ul>
<b>QoS</b>	<ul style="list-style-type: none"> <li>● Traffic Classes (8 active priorities)</li> <li>● Port Default Priority, User Priority,</li> <li>● Input priority mapping</li> <li>● QoS Control List (QCL Mode)</li> <li>● Storm Control for UC, BC and Unknown</li> <li>● Port policers</li> <li>● Global/VCAP (ACL) policers</li> <li>● Port egress shaper</li> <li>● Queue egress shapers</li> <li>● DiffServ (RFC2474) remarking</li> <li>● Tag remarking</li> <li>● Scheduler mode</li> </ul>
<b>Security</b>	<ul style="list-style-type: none"> <li>● Port-Based 802.1X, Single 802.1X, Multiple 802.1X,</li> <li>● MAC-Based Authentication</li> <li>● VLAN Assignment , QoS Assignment, Guest VLAN</li> <li>● RADIUS Accounting</li> <li>● MAC Address Limit</li> <li>● IP MAC binding, IP/MAC binding dynamic to static</li> <li>● TACACS+</li> <li>● Web &amp; CLI Authentication</li> <li>● Authorization (15 user levels)</li> <li>● ACLs for filtering/policing/port copy</li> <li>● IP source guard</li> </ul>
<b>Synchronization</b>	<ul style="list-style-type: none"> <li>● NTPv4 Client</li> </ul>
<b>Management</b>	<ul style="list-style-type: none"> <li>● DHCP Client,</li> <li>● DNS client, proxy</li> <li>● HTTP Server</li> <li>● CLI - Console Port &amp; Telnet</li> <li>● Text Configuration download or upload</li> <li>● Management access filtering</li> <li>● HTTPS</li> <li>● SSHv2</li> <li>● IPv6 Management</li> <li>● System Syslog</li> <li>● Software Upload via web</li> <li>● SNMP v1 / v2c / v3 Agent</li> <li>● RMON (Group 1, 2, 3 &amp; 9)</li> <li>● RMON alarm and event(CLI,web)</li> <li>● SNMP multiple trap destinations</li> <li>● IEEE 802.1AB-2005 Link Layer Discovery LLDP</li> <li>● Cisco Discovery filtering - CDP</li> <li>● sFlow</li> <li>● Daylight Saving</li> </ul>
<b>SFP DDMI</b>	<ul style="list-style-type: none"> <li>● Support</li> </ul>
<b>LED Indicators</b>	<ul style="list-style-type: none"> <li>● Per Port : Link/Act, Green: 1000Mbps ; Yellow: 10/100Mbps</li> <li>● Per Device : Power, System, Master, Stack ID</li> </ul>
<b>Power Consumption</b>	<ul style="list-style-type: none"> <li>● 35 Watt Max.</li> </ul>
<b>Power Supply</b>	<ul style="list-style-type: none"> <li>● Internal Power supply 100~240VAC, 50/60 Hz</li> </ul>
<b>Environment</b>	<ul style="list-style-type: none"> <li>● Operating Temperature: 0°C to 50°C</li> <li>● Storage Temperature: -20 ~ 70°C</li> <li>● Humidity: 10% to 90% (Non-Condensing)</li> </ul>
<b>Dimension</b>	<ul style="list-style-type: none"> <li>● 440 * 44 * 172 mm (WxHxD)</li> </ul>
<b>Certification</b>	<ul style="list-style-type: none"> <li>● FCC, CE</li> </ul>

## Application



## Ordering information

**RP-G2804IXS** 24-P Gigabit + 4-SFP+(1G/10G) L2+ Managed Stackable Switch