

RP-G2626I

24-P Gigabit + 2-TP/SFP (100/1G) combo L2+ Managed Switch



RP-G2626I is a 26-port Managed Gigabit Switch which delivers 24 (10M/100M/1G) RJ45 ports, 2 Combo GbE RJ45/SFP ports and RJ45 Console port.

RP-G2626I offers full suite of comprehensive Layer 2 switching capabilities such as ACL, Spanning Tree, DHCP Relay, IGMP QoS functions ... etc., and provides advanced L3 features like Static Route and IPv6 / IPv4 management functions. The switch provides a reliable infrastructure for your business network and delivers more intelligent features you need to improve the availability of your critical business applications, it protects your sensitive information, and optimizes your network bandwidth to deliver information and applications more effectively. RP-G2626I provides the ideal combination of affordability and capabilities for small- and medium-size businesses to build high-performance network efficiently.

RP-G2626I complies with 802.3az, the green feature enables the switch to automatically detect the length of connected Ethernet cables and adjust power usage accordingly. RP-G2626I comes in a fanless design that ensures silent operation in environments.

Features

- Support IPv4/IPv6 dual stack management
- Support SSH/SSL secured management
- Support SNMP v1/v2c/v3
- Support RMON groups 1,2,3,9
- Support sFlow
- Support IGMP v1/v2/v3 Snooping
- Support MLD v1/v2 Snooping
- Support RADIUS and TACACS+ authentication
- Support IP Source Guard
- Support DHCP Relay (Option 82)
- Support DHCP Snooping
- Support ACL and QCL for traffic filtering
- Support 802.1d(STP), 802.1w(RSTP) and 802.1s(MSTP)
- Support LACP and static link aggregation
- Support Q-in-Q double tag VLAN
- Support GVRP dynamic VLAN
- IEEE 802.3az EEE Energy Efficient Ethernet standard for green Ethernet
- Fanless design

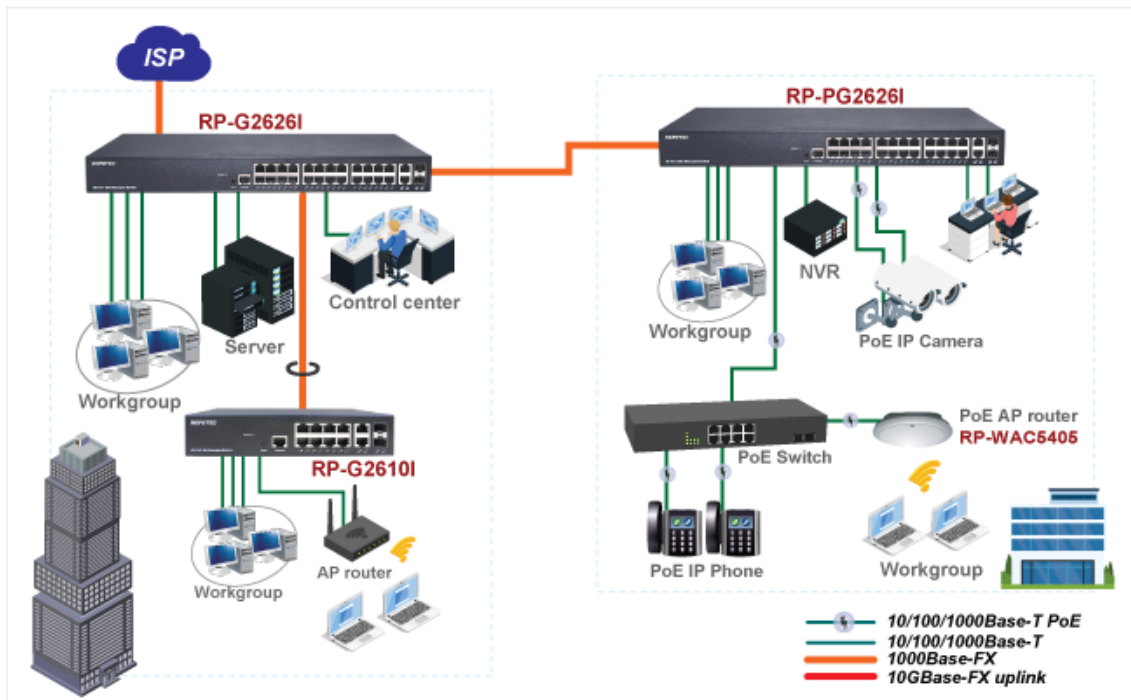
Specifications

Standards	<ul style="list-style-type: none"> ● IEEE 802.3 10Base-T Ethernet (twisted-pair copper) ● IEEE 802.3u 100Base-TX Ethernet (twisted-pair copper) ● IEEE 802.3ab 1000Base-T Ethernet (twisted-pair copper) ● IEEE 802.3z 1000Base-X Ethernet ● IEEE 802.3x Flow Control capability ● IEEE802.3az Energy Efficient Ethernet
Interface	<ul style="list-style-type: none"> ● Port 1 to 24: RJ-45 10/100/1000Mbps, auto MDI/X ● Port 25 to 26: RJ45/SFP(100/1000Mbps) combo ● RJ-45 Console port ● Reset Button
Forwarding Capacity	<ul style="list-style-type: none"> ● 38.68 Mpps
Switching Capacity	<ul style="list-style-type: none"> ● 52 Gbps
Jumbo frames	<ul style="list-style-type: none"> ● 9216 Bytes
MAC Table	<ul style="list-style-type: none"> ● 8K MAC addresses
Layer 2 Switching	
Spanning Tree Protocol (STP)	<ul style="list-style-type: none"> ● Standard Spanning Tree 802.1d ● Rapid Spanning Tree (RSTP) 802.1w ● Multiple Spanning Tree (MSTP) 802.1s
Trunking	<ul style="list-style-type: none"> ● Link Aggregation Control Protocol (LACP) IEEE 802.3ad <ul style="list-style-type: none"> ■ Up to 13 groups ■ Up to 4 ports per group
VLAN	<ul style="list-style-type: none"> ● Support up to 4K VLANs simultaneously (out of 4096 VLAN IDs) <ul style="list-style-type: none"> ■ Port-based VLAN ■ 802.1Q tag-based VLAN ■ MAC-based VLAN ■ Management VLAN ■ Private VLAN Edge (PVE) ■ Q-in-Q (double tag) VLAN ■ Voice VLAN ■ GARP VLAN Registration Protocol (GVRP)
DHCP Relay	<ul style="list-style-type: none"> ● Relay of DHCP traffic to DHCP server in different VLAN. ● Works with DHCP Option 82
IGMP v1/v2/v3 snooping	<ul style="list-style-type: none"> ● IGMP limits bandwidth-intensive multicast traffic to only the requesters ● Supports 1024 multicast groups
IGMP Querier	<ul style="list-style-type: none"> ● IGMP querier is used to support a Layer 2 multicast domain of snooping switches in the absence of a multicast router
IGMP Proxy	<ul style="list-style-type: none"> ● IGMP snooping with proxy reporting or report suppression actively filters IGMP packets in order to reduce load on the multicast router
MLD v1/v2 snooping	<ul style="list-style-type: none"> ● Deliver IPv6 multicast packets only to the required receivers
Layer 3 Switching	
IPv4 Static Routing	<ul style="list-style-type: none"> ● IPv4 Unicast: Static routing
IPv6 Static Routing	<ul style="list-style-type: none"> ● IPv6 Unicast: Static routing
Security	
Secure Shell (SSH)	<ul style="list-style-type: none"> ● SSH secures Telnet traffic in or out the switch, SSH v1 and v2 are supported
Secure Sockets Layer (SSL)	<ul style="list-style-type: none"> ● SSL Support: Encrypts the http traffic, allowing advance secure access to the browser-based management GUI in the switch
IEEE 802.1X	<ul style="list-style-type: none"> ● IEEE802.1X: RADIUS authentication, authorization and accounting, MD5 hash, guest VLAN , single/multiple host mode and single/multiple sessions

	<ul style="list-style-type: none"> ● Supports IGMP-RADIUS based 802.1X ● Dynamic VLAN assignment
Layer 2 Isolation Private VLAN Edge (PVE)	<ul style="list-style-type: none"> ● PVE (also known as protected ports) provides L2 isolation between clients in the same VLAN. Supports multiple uplinks
Port Security	<ul style="list-style-type: none"> ● Locks MAC addresses to ports, and limits the number of learned MAC addresses
IP Source Guard	<ul style="list-style-type: none"> ● Prevents illegal IP address from accessing to specific port in the switch
RADIUS/ TACACS+	<ul style="list-style-type: none"> ● Supports RADIUS and TACACS+ authentication. Switch as a client
Storm control	<ul style="list-style-type: none"> ● Prevents traffic on a LAN from being disrupted by a broadcast, multicast, or unicast storm on a port
DHCP Snooping	<ul style="list-style-type: none"> ● A feature acts as a firewall between untrusted hosts and trusted DHCP servers
ACLs	<ul style="list-style-type: none"> ● Supports up to 256 entries. Drop or rate limitation based on: <ul style="list-style-type: none"> ■ Source and destination MAC, VLAN ID or IP address, protocol, port ■ Differentiated services code point (DSCP) / IP precedence ■ TCP/ UDP source and destination ports ■ 802.1p priority ■ Ethernet type ■ Internet Control Message Protocol (ICMP) packets ■ TCP flag
Quality of Service	
Hardware Queue	<ul style="list-style-type: none"> ● Support 8 hardware queues
Scheduling	<ul style="list-style-type: none"> ● Strict priority and weighted round-robin (WRR) ● Queue assignment based on DSCP and class of service
Classification	<ul style="list-style-type: none"> ● Port based ● 802.1p VLAN priority based ● IPv4/IPv6 precedence / DSCP based ● Differentiated Services (DiffServ) ● Classification and re-marking ACLs
Rate Limiting	<ul style="list-style-type: none"> ● Ingress policer ● Egress shaping and rate control ● Per port
Management	
DHCP Server	<ul style="list-style-type: none"> ● Support DHCP server to assign IP to DHCP clients
Remote Monitoring (RMON)	<ul style="list-style-type: none"> ● Embedded RMON agent supports RMON groups 1,2,3,9 (history, statistics, alarms, and events) for enhanced traffic management, monitoring and analysis
Port mirroring	<ul style="list-style-type: none"> ● Traffic on a port can be mirrored to another port for analysis with a network analyzer or RMON probe. Up to N-1 (N is Switch's Ports) ports can be mirrored to single destination port. A single session is supported
UPnP	<ul style="list-style-type: none"> ● The Universal Plug and Play Forum, an industry group of companies working to enable device-to-device interoperability by promoting Universal Plug and Play
s-Flow	<ul style="list-style-type: none"> ● The industry standard for monitoring high speed switched networks. It gives complete visibility into the use of networks enabling performance optimization, accounting/billing for usage, and defense against security threats
IEEE 802.1ab (LLDP)	<ul style="list-style-type: none"> ● Used by network devices for advertising their identities, capabilities, and neighbors on an IEEE 802ab local area network ● Support LLDP-MED extensions
Web GUI Interface	<ul style="list-style-type: none"> ● Built-in switch configuration utility for browser-based device configuration
CLI	<ul style="list-style-type: none"> ● For users to configure/manage switches in command line modes

Dual Image	<ul style="list-style-type: none"> • Independent primary and secondary images for backup while upgrading
SNMP	<ul style="list-style-type: none"> • SNMP version1, 2c and 3 with support for traps, and SNMP version 3 user-based security model (USM)
Firmware Upgrade	<ul style="list-style-type: none"> • Web browser upgrade (HTTP/ HTTPS) and TFTP • Upgrade through console port as well
NTP	<ul style="list-style-type: none"> • Network Time Protocol (NTP) is a networking protocol for clock synchronization between computer systems over packet-switched
Other Management	<ul style="list-style-type: none"> • HTTP/HTTPS; SSH • DHCP Client/ DHCPv6 Client • Cable Diagnostics • Ping • Syslog • Telnet Client • IPv6 Management
Power Supply	<ul style="list-style-type: none"> • Internal Power supply 100~240VAC, 50/60 Hz
Environment	<ul style="list-style-type: none"> • Operating temperature: 0°C to 45°C • Storage Temperature: -20 to 70°C • Operating Humidity: 10% to 90% (Non-Condensing)
Dimension	<ul style="list-style-type: none"> • 442 x 44 x 211mm (WxHxD)
Weight	<ul style="list-style-type: none"> • 2.5 kgs
Certification	<ul style="list-style-type: none"> • FCC, CE

Application



Ordering information

RP-G2626I 24-P Gigabit + 2-TP/SFP(100/1G) combo L2+ Managed Switch

REPOTEC CO., LTD.

3F., No.258, Liancheng Rd., Zhonghe District., New Taipei City 235, Taiwan

TEL: 886-2-8227-1888 FAX: 886-2-8227-1818