

RP-G1526W

24-P Gigabit + 2-SFP (100/1G) slot Web smart Switch



RP-G1526W web smart+ managed GbE switch is the next-generation Ethernet switch offering powerful managed features with better functionality and usability. That delivers the cost-effectively business and transports Ethernet services via fiber or copper connections.

RP-G1526W delivers 24 (10M/100M/1G) RJ45 ports and 2 GbE SFP ports. RP-G1526W provides high HW performance and environment flexibility for SMBs and Enterprises.

The embedded Device Managed System (DMS) features provide users with the benefits of easy-to-use/configure/install/troubleshoot in the video surveillance, wireless access, and other SMBs and Enterprises applications. RP-G1526W is ideal to deliver management simplicity, better user experience, and lowest total cost of ownership.

Features

- L2+ features provide better manageability, security, QoS, and performance.
- Support IPv4/IPv6 dual stack management
- Support SSH/SSL secured management
- Support SNMP v1/v2c
- Support RMON groups 1,2,3,9
- Support sFlow (option)
- Support IGMP v1/v2 Snooping
- Support MLD v1/v2 Snooping
- Support RADIUS and TACACS+ authentication
- Support IP Source Guard
- Support DHCP Relay (Option 82)
- Support DHCP Snooping
- Support 802.1d(STP), 802.1w(RSTP) and 802.1s(MSTP)
- Support LACP and static link aggregation
- Support Q-in-Q double tag VLAN
- Support GVRP dynamic VLAN
- IEEE 802.3az EEE Energy Efficient Ethernet standard for green Ethernet
- Desktop, Wall type, Optional 19" Rack-mounted bracket

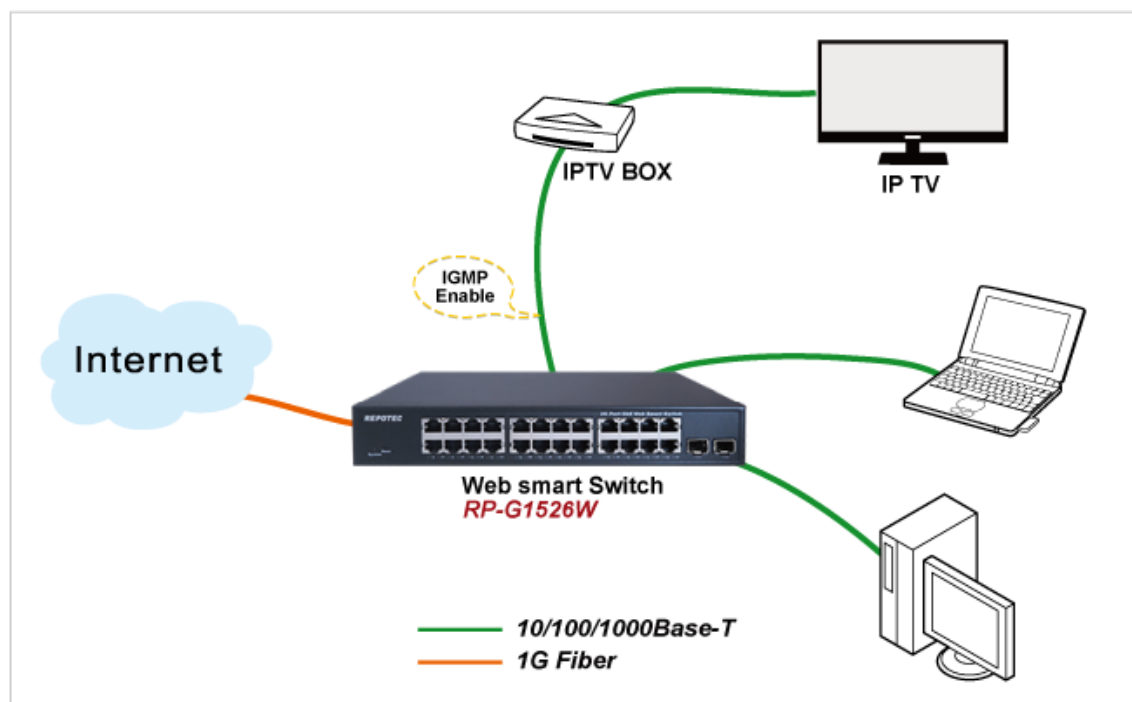
Specifications

Standards	<ul style="list-style-type: none">• IEEE 802.3 10Base-T Ethernet• IEEE 802.3u 100Base-TX Ethernet• IEEE 802.3ab 1000Base-T Ethernet• IEEE 802.3z 1000Base-X Ethernet• IEEE 802.3x Flow Control capability• IEEE802.3az Energy Efficient Ethernet
Interface	<ul style="list-style-type: none">• Port 1 to 24: RJ-45 10/100/1000Mbps, auto MDI/X• Port 25 to 26: SFP(100/1000Mbps) slot• Reset Button
Forwarding Capacity	<ul style="list-style-type: none">• 38.688 Mpps
Switching Capacity	<ul style="list-style-type: none">• 52 Gbps
Jumbo frames	<ul style="list-style-type: none">• 9216 Bytes
MAC Table	<ul style="list-style-type: none">• 8K MAC addresses
Layer 2 Switching	
Spanning Tree Protocol (STP)	<ul style="list-style-type: none">• Standard Spanning Tree 802.1d• Rapid Spanning Tree (RSTP) 802.1w• Multiple Spanning Tree (MSTP) 802.1s
Trunking	<ul style="list-style-type: none">• Link Aggregation Control Protocol (LACP) IEEE 802.3ad• Static aggregation
VLAN	<ul style="list-style-type: none">• Support up to 4K VLANs simultaneously (out of 4096 VLAN IDs)<ul style="list-style-type: none">■ Port-based VLAN■ 802.1Q tag-based VLAN■ Protocol based VLAN■ IP subnet-based VLAN■ Private VLAN Edge (PVE)■ MAC-based VLAN■ Q-in-Q (double tag) VLAN■ Voice VLAN■ GARP VLAN Registration Protocol (GVRP) (option)
DHCP Relay	<ul style="list-style-type: none">• Relay of DHCP traffic to DHCP server in different VLAN.• Works with DHCP Option 82
IGMP snooping	<ul style="list-style-type: none">• IGMP limits bandwidth-intensive multicast traffic to only the requesters• Supports 512 multicast groups
IGMP Querier	<ul style="list-style-type: none">• IGMP querier is used to support a Layer 2 multicast domain of snooping switches in the absence of a multicast router
IGMP Proxy	<ul style="list-style-type: none">• IGMP snooping with proxy reporting or report suppression actively filters IGMP packets in order to reduce load on the multicast router
MLD v1/v2 Snooping	<ul style="list-style-type: none">• Delivers IPv6 multicast packets only to the required receivers
Multicast VLAN	<ul style="list-style-type: none">• It uses a dedicated manually configured VLAN, called the multicast

Registration (MVR)	VLAN, to forward multicast traffic over Layer 2 network in conjunction with IGMP snooping
Security	
Secure Shell (SSH)	<ul style="list-style-type: none"> • SSH secures Telnet traffic in or out the switch, SSH v1 and v2 are supported
Secure Sockets Layer (SSL)	<ul style="list-style-type: none"> • SSL encrypts the http traffic, allowing advanced secure access to the browser-based management GUI in the switch
IEEE 802.1X	<ul style="list-style-type: none"> • IEEE802.1X: RADIUS authentication, authorization and accounting, MD5 hash, guest VLAN, single/multiple host mode and single/multiple sessions • Supports IGMP-RADIUS based 802.1X • Dynamic VLAN assignment
Layer 2 Isolation Private VLAN Edge	<ul style="list-style-type: none"> • PVE (also known as protected ports) provides L2 isolation between clients in the same VLAN. Supports multiple uplinks
Port Security	<ul style="list-style-type: none"> • Locks MAC addresses to ports, and limits the number of learned MAC address
IP Source Guard	<ul style="list-style-type: none"> • Prevents illegal IP address from accessing to specific port in the switch
RADIUS/ TACACS+	<ul style="list-style-type: none"> • Supports RADIUS and TACACS+ authentication. Switch as a client
Storm control	<ul style="list-style-type: none"> • Prevents traffic on a LAN from being disrupted by a broadcast, multicast, or unicast storm on a port
DHCP Snooping	<ul style="list-style-type: none"> • A feature acts as a firewall between untrusted hosts and trusted DHCP servers
Loop Protection	<ul style="list-style-type: none"> • To prevent unknown unicast, broadcast and multicast loops in Layer 2 switching configurations
ACLs	<ul style="list-style-type: none"> • Supports up to 384 entries. Drop or rate limitation based on: <ul style="list-style-type: none"> ■ Source and destination MAC, VLAN ID or IP address, protocol, port, ■ Differentiated services code point (DSCP) / IP precedence ■ TCP/ UDP source and destination ports ■ 802.1p priority ■ Ethernet type ■ Internet Control Message Protocol (ICMP) packets ■ TCP flag
Quality of Service	
Hardware Queue	<ul style="list-style-type: none"> • Support 8 hardware queues
Scheduling	<ul style="list-style-type: none"> • Strict priority and weighted round-robin (WRR) • Queue assignment based on DSCP and class of service
Classification	<ul style="list-style-type: none"> • Port based • 802.1p VLAN priority based
Rate Limiting	<ul style="list-style-type: none"> • Ingress policer • Egress shaping and rate control • Per port

Management	
Port mirroring	<ul style="list-style-type: none"> • Traffic on a port can be mirrored to another port for analysis with a network analyzer or RMON probe. Up to N-1 (N is Switch's Ports) ports can be mirrored to single destination port. A single session is supported
IEEE 802.1ab (LLDP)	<ul style="list-style-type: none"> • Used by network devices for advertising their identities, capabilities, and neighbors on an IEEE 802ab local area network • Support LLDP-MED extensions
Web GUI Interface	<ul style="list-style-type: none"> • Built-in switch configuration utility for browser-based device configuration
Dual Image	<ul style="list-style-type: none"> • Independent primary and secondary images for backup while upgrading
UPnP	<ul style="list-style-type: none"> • The Universal Plug and Play Forum, an industry group of companies working to enable device-to-device interoperability by promoting Universal Plug and Play
DHCP Server	<ul style="list-style-type: none"> • Support DHCP server to assign IP to DHCP clients
Remote Monitoring (RMON)	<ul style="list-style-type: none"> • Embedded RMON agent supports RMON groups 1,2,3,9 (history, statistics, alarms, and events) for enhanced traffic management, monitoring and analysis
SNMP	<ul style="list-style-type: none"> • SNMP version1, 2c and 3 with support for traps, and SNMP version 3 user-based security model (USM)
Firmware Upgrade	<ul style="list-style-type: none"> • Web browser upgrade (HTTP/ HTTPs) and TFTP
NTP	<ul style="list-style-type: none"> • Network Time Protocol (NTP) is a networking protocol for clock synchronization between computer systems over packet-switched
Other Management	<ul style="list-style-type: none"> • HTTP/HTTPs • DHCP Client/ DHCPv6 Client • Cable Diagnostics • Syslog • Telnet Client; SSH • IPv6 Management
Power Supply	<ul style="list-style-type: none"> • Internal Power supply 100~240VAC, 50/60 Hz
Environment	<ul style="list-style-type: none"> • Operating temperature: 0°C to 50°C • Storage Temperature: -20 to 70°C • Operating Humidity: 10% to 90% (Non-Condensing)
Dimension	<ul style="list-style-type: none"> • 280 x 44 x 166mm (WxHxD)
Certification	<ul style="list-style-type: none"> • FCC, CE

Application



Ordering information

RP-G1526W 24-P Gigabit + 2-SFP(100/1G) slot Web Smart Switch