



RP-2402GIS+

24*Fast Ethernet +2G(1000T/SFP) Ports L2+ Managed Switch



RP-2402GI/S+ is a cost-efficient and high-performance management switch with 24TX + 2G ports, providing 10/100/1000 Mbps Ethernet connectivity. It supports various management functions, including ACL packet control, SNMP/Http/Telnet remote management, and L2 switch management features such as VLAN, Port Security, QoS, and Port Mirroring. The switch also features Auto-MDIX for easy cable connection on every port.

RP-2402GI/S+ offers both out-band console and in-band SNMP/Http/Telnet management interfaces, ensuring flexible management options. Additionally, the switch supports HTTPS web security for enhanced security measures. With 4 priority queues per port, it enables effective QoS application, while port-based VLAN, 802.1Q VLAN, and Private VLAN functionalities enhance network segmentation and control. The switch also provides features like protected port, Loop Back Detection, Q-in-Q (double tagging), and IP-MAC Binding.

RP-2402GI/S+ is a cost-effective, high-performance switch, suitable for organizations aiming to enhance network efficiency, security, and performance while maintaining simplicity and affordability.

Features

- Support out-band console and in-band SNMP/Http/Telnet management interface
- Support Https web security function
- 4 priority queues are supported on each port for QoS application
- Support port-based VLAN, 802.1Q VLAN and Private VLAN
- Support protected port and LoopBack Detection function
- Support Q-in-Q(double tagging) function
- Support static Mac address access limit and dynamic Mac address number on port
- Support IP-Mac Binding on port
- Support IEEE 802.1x port security function, and Dynamic VLAN, Guest VLAN functions
- Support ACL function for L2 ~ L4 packet control
- Support 802.1d Spanning Tree Compatible & 802.1w Rapid Spanning Tree

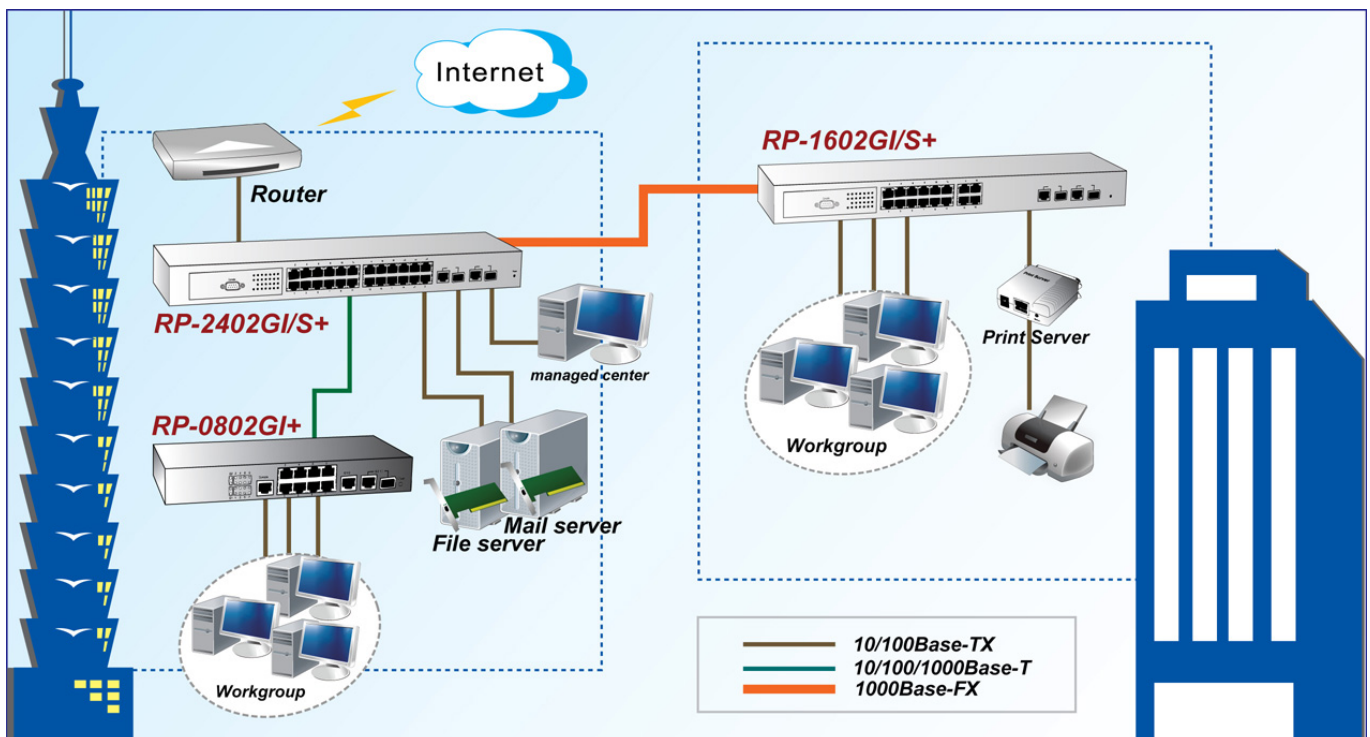
- Support ingress/egress rate control on port
- Support broadcast/multicast/flooding traffic control
- Support IP Multicast with IGMP snooping / query / fast leave / filtering /group limited /MVR
- Support DHCP Client / DHCP Relay / DHCP Option 82 / DHCP Snooping function
- Support RMON 1,2,3,9
- Support remote port configuration setting and statistics monitoring
- Support Text configuration download and upload

Specifications

Standards	<ul style="list-style-type: none"> • IEEE802.3(10BaseT Ethernet), • IEEE802.3u(100Base Fast Ethernet), • IEEE802.3ab(1000BaseT), IEEE802.3z(1000Base) • IEEE802.1w, IEEE802.1P, IEEE802.1Q, IEEE802.1x
Ports	<ul style="list-style-type: none"> • 24* RJ45 ports, with 10/100Mbps, Full/Half duplex auto-negotiation and Auto-MDIX function • 2* RJ45/SFP ports for gigabit connections (Port 25,26) • Console Port: DB9 console port
LED	<ul style="list-style-type: none"> • Per Port : Link/Activity • Per Device : Power
Filter & Forwarding Rate	<ul style="list-style-type: none"> • Full line speed
Transmission method	<ul style="list-style-type: none"> • Store-and-forward
Switching Capacity	<ul style="list-style-type: none"> • 8.8Gbps
Packet Buffer	<ul style="list-style-type: none"> • 384K Bytes (Packet buffer & Control Memory)
Mac Table Size	<ul style="list-style-type: none"> • 8K
Max Packet Size	<ul style="list-style-type: none"> • 2048 bytes (including 4 bytes CRC checksum)
Flow Control	<ul style="list-style-type: none"> • Back pressure for half duplex, IEEE802.3x for full duplex
Management	<ul style="list-style-type: none"> • Out-band : Console (Command Line Interface) • In-band : SNMP/Telnet/Http/Https(SSL)
DHCP	<ul style="list-style-type: none"> • Support DHCP Client / Relay / Option 82 functions
SNMP agent	<ul style="list-style-type: none"> • Version. 1, 2c • Support MIB II(RFC1213), Bridge MIB, VLAN MIB, Private MIB
RMON	<ul style="list-style-type: none"> • Groups 1, 2, 3, 9(Alarm, Statistics, History, Event)
Management Security	<ul style="list-style-type: none"> • Limit by IP(Subnet)/Action(View/Modify)/Interface(Telnet/Web/SNMP)
Logging	<ul style="list-style-type: none"> • Support Local Logging and Syslog
Security	<ul style="list-style-type: none"> • Static Mac ID Access Limit: Limit on port • Dynamic Mac ID Limit: Limit Mac ID number on port • IP-Mac-Port Binding: 256 entries • IEEE 802.1x: Support Transparent and Authentication modes and support Dynamic VLAN and Guest VLAN functions
VLAN	<ul style="list-style-type: none"> • SVL/IVL Mode • Port-based VLAN / Metro VLAN / Private VLAN / Q-in-Q / GVRP • 802.1Q VLAN, with 1024 co-current groups maximum from 4094 VLANs
LoopBack Detection	<ul style="list-style-type: none"> • Yes
Protected Port	<ul style="list-style-type: none"> • Yes
Trunking	<ul style="list-style-type: none"> • 14 groups Max. with Static and Dynamic combined up to 8 ports

	for a trunk group
QoS	<ul style="list-style-type: none"> Four priority queues per port, Port-based / 802.1p / DiffServ QoS With Strict Priority / WRR scheduling
Spanning Tree	<ul style="list-style-type: none"> Support IEEE 802.1w Rapid Spanning Tree, /w 802.1D compatible mode
Port Mirror	<ul style="list-style-type: none"> for Egress/Ingress packets, support DA/SA filtering function
Rate Control	<ul style="list-style-type: none"> Limit on port for both Ingress/Egress traffic, with 62.5Kbps or 1Mbps step
Storm Control	<ul style="list-style-type: none"> for broadcast/multicast/flooding traffic control
IP Multicast	<ul style="list-style-type: none"> Support IGMP Snooping(256 groups Max.) / Query / Fast Leave / Filtering Profile /Group Limited Number Per Port / MVR
ACL	<ul style="list-style-type: none"> L2/L2+L3/L3+L4 packet control (700 entries share with IP-MAC-Port)
Maintenance	<ul style="list-style-type: none"> Software Upgrade: Out-band: Xmodem, In-band: TFTP Support Event Log and Syslog Support Text Configuration
Power Supply	<ul style="list-style-type: none"> Internal power supply 100-240VAC, 50/60 Hz
Power Consumption	<ul style="list-style-type: none"> 13W
Environment	<ul style="list-style-type: none"> Operating temperature : 0°C to 50°C Operating Humidity:10% to 90% (Non-Condensing)
Dimension	<ul style="list-style-type: none"> 430 * 105 * 44 mm
Certifications	<ul style="list-style-type: none"> FCC, CE

Application



Ordering information

RP-2402GIS+ 24*Fast Ethernet +2G(1000T/SFP) Ports L2+ Managed Switch