



RP-IPG844

8-P Gigabit Industrial Ethernet Switch, w/ 4-port PoE+

RP-IPG844 is an industrial 8 port Gigabit high power POE switch providing 48-56VDC input sources. RP-IPG844 complies with IEEE 802.3af/at standards with 4 port POE PSE port to power up 15W or 30W PD.

RP-IPG844 is well suited for applications in deploying IP surveillance, traffic monitoring and for a broad range of applications. It can be used as a stand-alone device for buses, trucks, and other vehicles for Surveillance purposes. It is being rigorously tested for your Security, Transportation and Telco application in climatically demanding environments with wide temperature range from -40 to 75°C.

With IP30 industrial case protection, the RP-IPG844 provides a high level of immunity against corrosion and electromagnetic interference. RP-IPG844 also allows either DIN rail or wall mounting for efficient use of cabinet space.

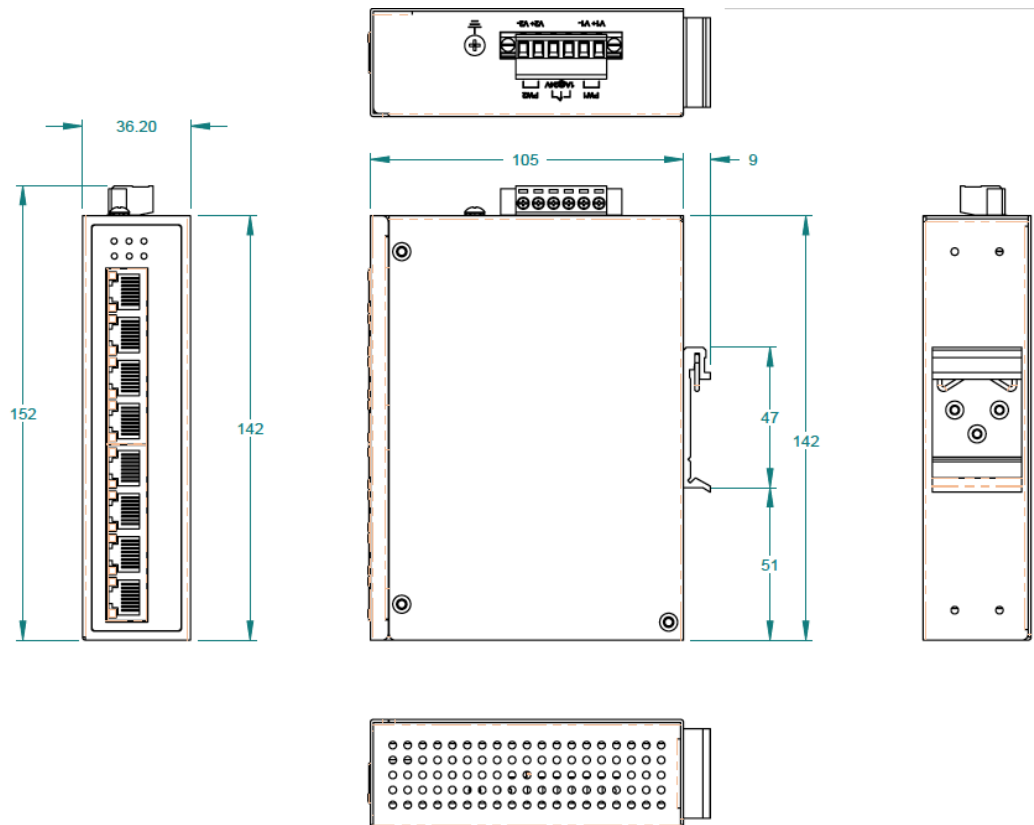
Features

- Supports P.S.E. based on IEEE 802.3at up to 30 Watts per port
- RJ-45 port support Auto MDI/MDI-X Function
- Store-and-Forward Switching Architecture
- Support 48~56VDC power inputs for power redundancy
- Back-plane (Switching Fabric): 16Gbps
- 9KB Jumbo Frame
- 1M Memory Buffer
- 8K MAC Address Table
- Power Polarity Reverse Protect
- Overload Current Re-settable Fuse Present
- IP-30 Protection
- DIN Rail and Wall Mount Design
- Support Wide Operating Temperature -40°C~75°C

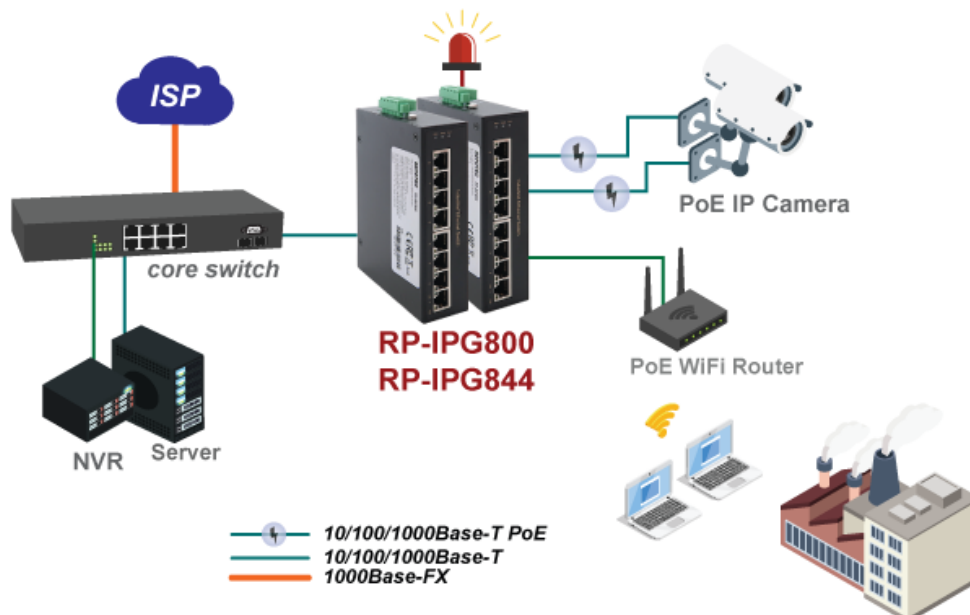
Specifications

Standards	<ul style="list-style-type: none"> • IEEE 802.3 10Base-T Ethernet • IEEE 802.3u 100Base-TX Fast Ethernet • IEEE 802.3ab 1000Base-T Gigabit Ethernet • IEEE802.3x Flow Control and Back Pressure, • IEEE802.3af for POE; IEEE802.3at for POE+
Switch Architecture	<ul style="list-style-type: none"> • Back-plane (Switching Fabric): 16Gbps
Data Processing	<ul style="list-style-type: none"> • Store and Forward
Flow Control:	<ul style="list-style-type: none"> • IEEE 802.3x Flow Control and Back Pressure
Jumbo Frame	<ul style="list-style-type: none"> • 9KB
Memory Buffer	<ul style="list-style-type: none"> • 1M
Mac Address	<ul style="list-style-type: none"> • 8K MAC
Interface	<ul style="list-style-type: none"> • 8 x 10/100/1000 Mbps TP Jack (RJ-45) auto negotiation, Auto MDI/MDI-X function, Full/Half duplex, with 4x 802.3af/at PoE PSE port, 30W per port
Network Cable	<ul style="list-style-type: none"> • UTP/STP above Cat.5e Cable EIA/TIA-568 10-ohm (100m)
Protocol	<ul style="list-style-type: none"> • CSMA/CD
LED Indicators	<ul style="list-style-type: none"> • Per unit: Power 1 (Green), Power 2 (Green), SW-relay (Amber) • Per port: Link/Active (Green), POE Detected (Amber)
Reverse polarity protection	<ul style="list-style-type: none"> • Present
Overload current protection	<ul style="list-style-type: none"> • Present
Power Consumption	<ul style="list-style-type: none"> • 5.76W@48 VDC full load, Without POE
Power Supply	<ul style="list-style-type: none"> • Redundant Dual DC 48V-56V Power Input • PoE input 48-56VDC
Alarm Relay Contact	<ul style="list-style-type: none"> • Relay outputs with current carrying capacity of 1A @24VDC • Relay in "OPEN" circuit mode when PW1 and PW2 are connected. in "SHORT" circuit mode when only one power supply is connected
PoE power	<ul style="list-style-type: none"> • POE power per port 30watts. Maximum 36Watts • Maximum total power 126Watts with 56VDC input, Supports IEEE802.3af/at
Removable Terminal Block	<ul style="list-style-type: none"> • Provide 2 Redundant power , Alarm relay contact ,6 Pin • Wire range: 0.34mm² to 2.5mm² • Solid wire (AWG):12-24/14-22 • Stranded wire(AWG): 12-24/14-22 • Torque:5lb-In/0.5Nm/0.56Nm • Wire Strip length: 7-8mm
Environment	<ul style="list-style-type: none"> • Operating temperature : -40°C~75°C • Storage temperature: -40°C ~85°C • Operating Humidity: 5% to 95% (Non-Condensing)
Dimension	<ul style="list-style-type: none"> • 142 x 36.2 x 105mm (LxWxD)
Housing	<ul style="list-style-type: none"> • Rugged Metal ,IP30 Protection
Installation	<ul style="list-style-type: none"> • DIN Rail and Wall Mount Design
EMC/EMS	<ul style="list-style-type: none"> • CE, FCC
EMI	<ul style="list-style-type: none"> • FCC Part 15 Subpart B Class A, CE EN 55022 Class A
Safety	<ul style="list-style-type: none"> • IEC EN60950-1
Stability Testing	<ul style="list-style-type: none"> • IEC60068-2-32 (Free fall), IEC60068-2-27 (Shock), IEC60068-2-6 (Vibration)

Dimension



Application



Ordering information

RP-IPG844 8-P Gigabit Industrial Ethernet Switch, w/ 4-port PoE+