



RP-IPG814-2F

14-P Gigabit 802.3at PoE + 2-1000M SFP Industrial Switch

RP-IPG814-2F Industrial Ethernet PoE Switch equipped with 14 port 802.3af/at 30W Gigabit PSE ports and 2 port 100M/1000M SFP. RP-IPG814-2F provides input power voltage 48~56VDC. It delivers 30watts power per PoE port and generates a total of 300Watts power to PD devices, and 2 SFP for long-distance Fiber Uplink.

RP-IPG814-2F features redundant power inputs with overload current protection, when one power fails to work, second one will be automatically to keep powering without any loss of operation. It enhances network system reliability and uptime. It accepts 3 power input source, from PW1, PW2, and PW3 Power DIN. RP-IPG814-2F has been rigorously tested especially for IP surveillance, traffic monitoring and for a broad range of applications. With the Cold-Design technology, it will not only power up your PD and also reduce its excessive heat to a minimum.

With IP30-rated rugged case protection allows for either DIN rail or wall mounting for efficient use of cabinet space. Its wide operating temperature ranges from -40°C to 75°C for harsh environment.

Features

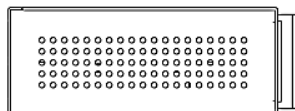
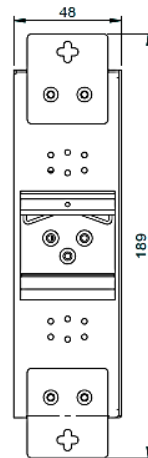
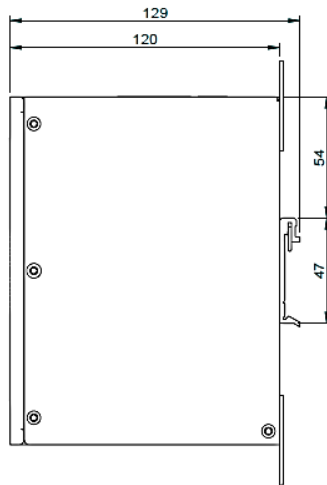
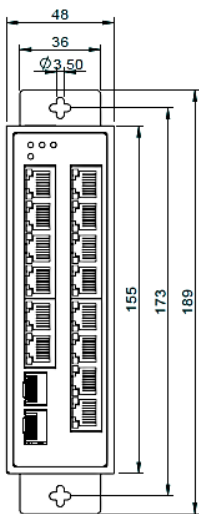
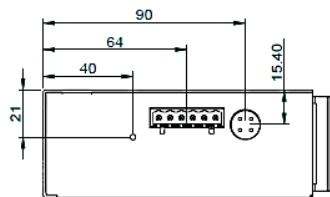
- Supports PSE. based on IEEE 802.3at up to 30 Watts per port
- Back-plane (Switching Fabric): 32Gbps
- 4.1M Memory Buffer
- 8K MAC Address Table
- Power Polarity Reverse Protect
- Overload Current Re-settable Fuse Present
- Redundant power inputs with overload current protection
- Alarm relay triggered by power failure
- Provide 3 power input source, from PW1, PW2, and PW3 Power DIN
- PW3 offers an independent DIN connection for optional power input.
- Free fall, shock-proof and vibration-proof for industries
- Supports 6000 VDC Ethernet ESD protection
- IP30-rated rugged case protection
- DIN Rail and Wall Mount Design for efficient use of cabinet space.
- Support Wide Operating Temperature -40°C ~75°C

Specifications

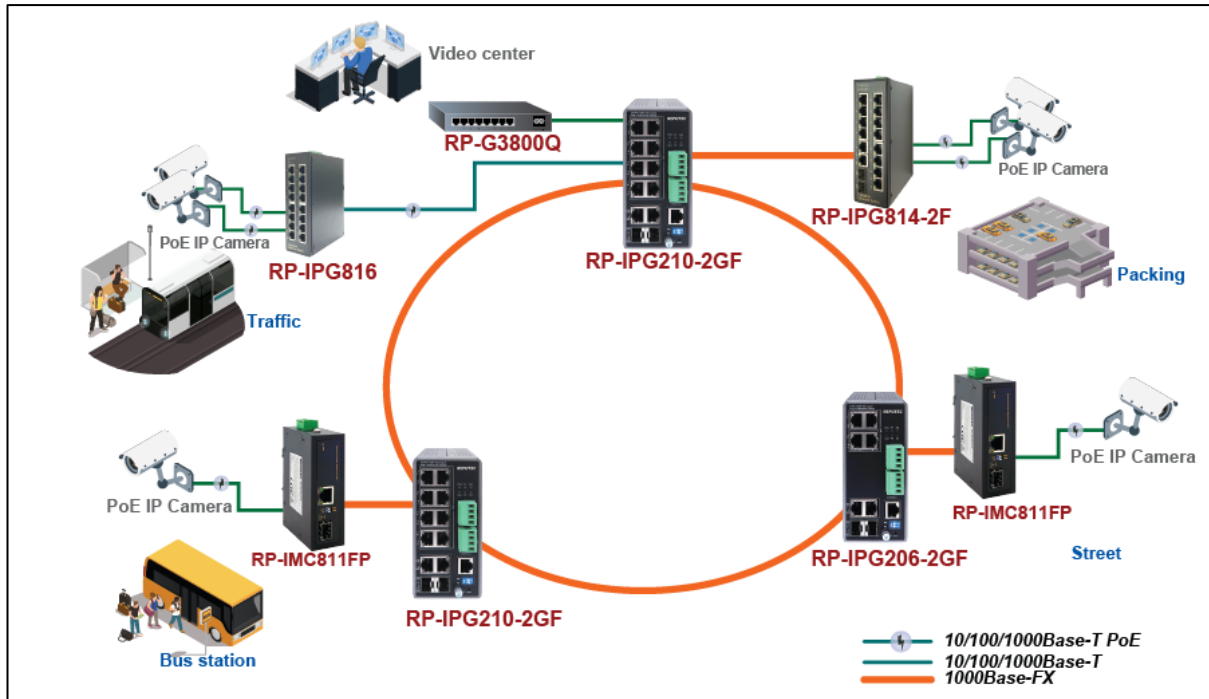
Standards	<ul style="list-style-type: none"> • IEEE 802.3 10Base-T Ethernet • IEEE 802.3u 100Base-TX Fast Ethernet • IEEE 802.3z 1000Base-X Gigabit Ethernet • IEEE802.3x Flow Control and Back Pressure • IEEE802.3af for PoE, IEEE802.3at for PoE+
Switch Architecture	<ul style="list-style-type: none"> • Back-plane (Switching Fabric): 32Gbps
Data Processing	<ul style="list-style-type: none"> • Store and forward
Transfer Rate	<ul style="list-style-type: none"> • 14,880pps for Ethernet port • 148,800pps for Fast Ethernet port • 1,488,000pps for Gigabit Fiber Ethernet port
Flow Control:	<ul style="list-style-type: none"> • IEEE 802.3x Flow Control and Back Pressure
Jumbo Frame	<ul style="list-style-type: none"> • 9KB
Mac Address	<ul style="list-style-type: none"> • 8K MAC
Buffer Memory	<ul style="list-style-type: none"> • 4.1Mbits
Interface	<ul style="list-style-type: none"> • 14 x 10/100/1000TX RJ-45 with auto negotiation, Auto MDI/MDI-X function, Full/Half duplex with 802.3at/af PSE ports • 2 1000M SFP slot
Network Cable	<ul style="list-style-type: none"> • UTP/STP Cat.5e cable or above Cable EIA/TIA-568 (100m)
Protocol	<ul style="list-style-type: none"> • CSMA/CD
LED Indicators	<ul style="list-style-type: none"> • Per unit: PW1(Green), PW2(Green), PW3(Amber) for External Power adapter, RLY(Amber) • Per port: RJ-45 port LNK(Green)/POE(Amber), SFP(Green)
Reverse polarity protection	<ul style="list-style-type: none"> • Present
Overload current protection	<ul style="list-style-type: none"> • Present
Power Consumption	<ul style="list-style-type: none"> • 5.76W@48 VDC full load, Without PoE
Power Supply	<ul style="list-style-type: none"> • Redundant Dual DC 48V-56V Power Input
Alarm Relay Contact	<ul style="list-style-type: none"> • Relay outputs with current carrying capacity of 1 A @24VDC, • Relay in open circuit mode when 2 powers are connected. in short circuit mode when only one power supply is connected
PoE power budget	<ul style="list-style-type: none"> • PoE power per port 30watts • Maximum total power 300Watts with 56VDC input, Supports IEEE802.3af/at
Removable Terminal Block	<ul style="list-style-type: none"> • Provide 2 Redundant power, Alarm relay contact ,6 Pin for PW1 and PW2 (PW3 is an independent Power din connection for external) • Wire range: 0.34mm² to 2.5mm² • Solid wire (AWG):12-24/14-22 • Stranded wire (AWG): 12-24/14-22 • Torque:5lb-In/0.5Nm/0.56Nm • Wire Strip length: 7-8mm
Environment	<ul style="list-style-type: none"> • Operating temperature: -40°C~75°C • Storage temperature: -40°C ~85°C • Operating Humidity: 5% to 95% (Non-Condensing)

Dimension	<ul style="list-style-type: none"> • 155 x 48 x 120mm (LxWxD)
Case	<ul style="list-style-type: none"> • Rugged Metal, IP30 Protection
Installation	<ul style="list-style-type: none"> • DIN Rail and Wall Mount
EMC	<ul style="list-style-type: none"> • CE, FCC, EN 55032/35
EMI	<ul style="list-style-type: none"> • CISPR 32, FCC Part 15B Class A
EMS	<ul style="list-style-type: none"> • IEC 61000-4-2 ESD: Contact: 6KV; Air: 8KV • IEC 61000-4-4 EFT: Power: 2KV; Signal: 2KV • IEC 61000-4-5 Surge: Power: 2KV; Signal: 2KV
Safety	<ul style="list-style-type: none"> • LVD (EN62368-1)
Stability Testing	<ul style="list-style-type: none"> • IEC60068-2-32 (Free fall), IEC60068-2-27 (Shock), IEC60068-2-6 (Vibration)

Dimension



Application



Ordering information

RP-IPG814-2F 14-P Gigabit 802.3at PoE + 2-1000M SFP Industrial Switch

REPOTEC CO., LTD.

3F., No.258, Liancheng Rd., Zhonghe District., New Taipei City 235, Taiwan
TEL: 886-2-8227-1888 FAX: 886-2-8227-1818