



RP-IPG800

8-P Gigabit Industrial PoE+ Switch

RP-IPG800 is an industrial 8 port Gigabit high power POE switch providing 48-56VDC input sources. RP-IPG800 complies with IEEE 802.3af/at standards supplying PoE power budget 30W per port.

RP-IPG800 is well suited for applications in deploying IP surveillance, traffic monitoring and for a broad range of applications. It can be used as a stand-alone device for buses, trucks, and other vehicles for Surveillance purposes. It is being rigorously tested for your Security, Transportation and Telco application in climatically demanding environments with wide temperature range from -40 to 75 degrees C.

With IP30 industrial case protection, the RP-IPG800 provides a high level of immunity against corrosion and electromagnetic interference. RP-IPG800 also allows either DIN rail or wall mounting for efficient use of cabinet space.

Features

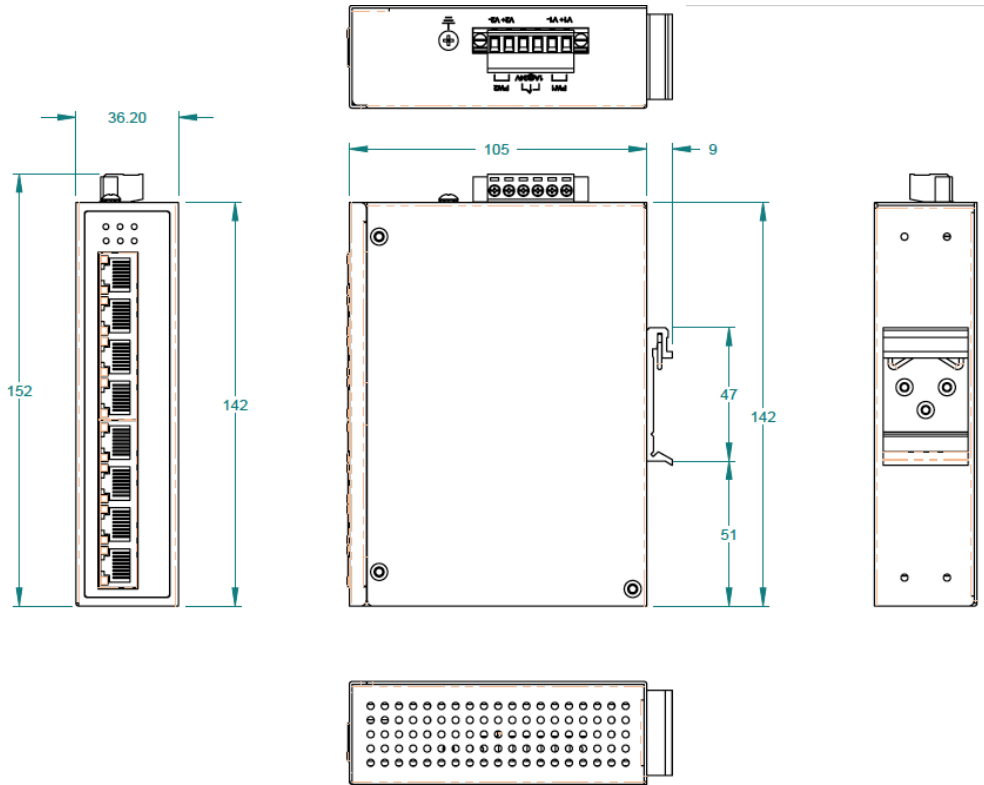
- Supports P.S.E. based on IEEE 802.3at up to 30 Watts per port
- RJ-45 port support Auto MDI/MDI-X Function
- Store-and-Forward Switching Architecture
- Support 48~56VDC power inputs for power redundancy
- Back-plane (Switching Fabric): 16Gbps
- 1M Memory Buffer
- 4K MAC Address Table
- Power Polarity Reverse Protect
- Overload Current Re-settable Fuse Present
- IP-30 Protection
- DIN Rail and Wall Mount Design
- Support Wide Operating Temperature -40°C~75°C
- 2kV surge protector

Specifications

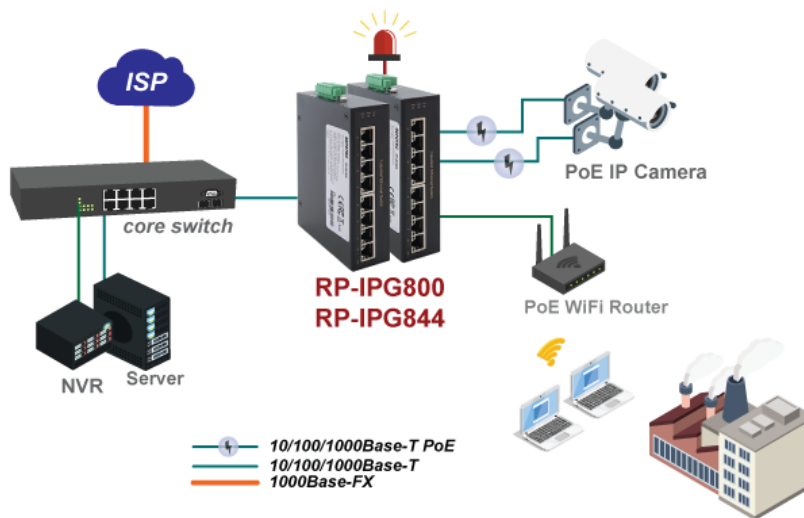
Standards	<ul style="list-style-type: none"> ● IEEE 802.3 10Base-T Ethernet ● IEEE 802.3u 100Base-TX Fast Ethernet ● IEEE 802.3ab 1000Base-T Gigabit Ethernet ● IEEE802.3x Flow Control and Back Pressure, ● IEEE802.3af for PoE; IEEE802.3at for PoE+ 	
Switch Architecture	<ul style="list-style-type: none"> ● Back-plane (Switching Fabric): 16Gbps 	
Data Processing	<ul style="list-style-type: none"> ● Store and Forward 	
Flow Control	<ul style="list-style-type: none"> ● IEEE 802.3x Flow Control and Back Pressure 	
Jumbo Frame	<ul style="list-style-type: none"> ● 9KB 	
Memory Buffer	<ul style="list-style-type: none"> ● 1M 	
Mac Address	<ul style="list-style-type: none"> ● 4K MAC 	
Interface	<ul style="list-style-type: none"> ● 8 x 10/100/1000 Mbps TP Jack (RJ-45) auto negotiation, Auto MDI/MDI-X function, Full/Half duplex, 802.3af/at PoE PSE port, 30W per port 	
Network Cable	<ul style="list-style-type: none"> ● UTP/STP above Cat.5e Cable ● EIA/TIA-568 10-ohm (100m) 	
Protocol	<ul style="list-style-type: none"> ● CSMA/CD 	
LED Indicators	<ul style="list-style-type: none"> ● Per unit: Power 1 (Green), Power 2 (Green), Relay (Amber) ● Per port: Link/Active (Green), PoE Detected (Amber) 	
Reserve polarity protection	<ul style="list-style-type: none"> ● Present 	
Overload current protection	<ul style="list-style-type: none"> ● Present 	
Power Consumption	<ul style="list-style-type: none"> ● 5.76W@48 VDC full load, Without PoE 	
Power Supply	<ul style="list-style-type: none"> ● Redundant Dual DC 48V-56V Power Input ● PoE input 48-56VDC 	
Alarm Relay Contact	<ul style="list-style-type: none"> ● Relay outputs with current carrying capacity of 1A @24VDC ● Relay in "OPEN" circuit mode when PW1 and PW2 are connected. in "SHORT" circuit mode when only one power supply is connected 	
POE power	<ul style="list-style-type: none"> ● POE power per port 30watts. Maximum 36Watts ● Maximum total power 200Watts with 56VDC input, Supports IEEE802.3af/at 	
Removable Terminal Block	<ul style="list-style-type: none"> ● Provide 2 Redundant power , Alarm relay contact ,6 Pin ● Wire range: 0.34mm² to 2.5mm² ● Solid wire (AWG):12-24/14-22 ● Stranded wire(AWG): 12-24/14-22 ● Torque:5lb-In/0.5Nm/0.56Nm ● Wire Strip length: 7-8mm 	
Environment	<ul style="list-style-type: none"> ● Operating temperature : -40°C~75°C ● Storage temperature: -40°C ~85°C ● Operating Humidity: 5% to 95% (Non-Condensing) 	
Dimension	<ul style="list-style-type: none"> ● 142 x 36.2 x 105mm (LxWxD) 	
Housing	<ul style="list-style-type: none"> ● Rugged Metal ,IP30 Protection 	
Installation	<ul style="list-style-type: none"> ● DIN Rail and Wall Mount Design 	
Certification	Safety	<ul style="list-style-type: none"> ● LVD (EN62368-1)
	EMC	<ul style="list-style-type: none"> ● CE, FCC, EN 55032/35
	EMI	<ul style="list-style-type: none"> ● CISPR 32, FCC Part 15B Class A
	EMS	<ul style="list-style-type: none"> ● IEC 61000-4-2 ESD: Contact: 6KV; Air: 8KV

Stability Testing	<ul style="list-style-type: none"> ● IEC 61000-4-4 EFT: Power: 2KV; Signal: 2KV ● IEC 61000-4-5 Surge: Power: 2KV; Signal: 2KV
	<ul style="list-style-type: none"> ● Vibration EN 60068-2-6, Shock EN 60068-2-27, Free Fall EN 60068-2-32

Dimension



Application



Ordering information

RP-IPG800 8-P Gigabit Industrial PoE+ Switch

REPOTEC CO., LTD.

3F., No.258, Liancheng Rd., Zhonghe District., New Taipei City 235, Taiwan
 TEL: 886-2-8227-1888 FAX: 886-2-8227-1818