

## **RP-IMC811FP**

### **10/100/1000Base-TX to 100/1000Base-X SFP Industrial PoE+ Media Converter**

RP-IMC811FP is a high-performing Industrial PoE Converter renowned for its stability and exceptional environmental adaptability. It is equipped with one 10/100/1000BASE-T RJ45 copper port and an additional slot for a 100/1000BASE-X SFP module, enabling versatile connectivity options for a range of network devices. This converter fully adheres to IEEE 802.3af/at standards, ensuring a PoE power budget of up to 30W. Its Cold-Design feature not only efficiently powers PD (Powered Device) equipment but also minimizes excessive heat generation, contributing to both power efficiency and device longevity.

RP-IMC811FP is engineered to withstand the harshest conditions. Its operating temperature range spanning from -40 to 75°C ensures its robustness in challenging environments. This adaptability makes the RP-IMC811FP a reliable solution for a wide array of applications, even in demanding settings with extreme temperature variations. Its IP30 industrial case protection further enhances its resilience by providing a high level of immunity against corrosion and electromagnetic interference. Additionally, the converter offers the flexibility of either DIN rail or wall mounting, ensuring efficient utilization of cabinet space, which is particularly valuable in industrial deployments.

RP-IMC811FP stands as a versatile and robust solution, combining adherence to PoE standards, a wide temperature tolerance, and industrial-grade protection. Its ability to operate in demanding environments while maintaining power efficiency and versatility in installation makes it an attractive choice for various critical applications where performance and reliability are paramount.

## **Features**

- Supports 48V-56VDC, Redundant power input
- Adjustable SFP speed 100M or 1000M
- PoE Output power up to 30Watts
- Reverse polarity protection
- Overload current protection
- ESD protection diodes on RJ-45 port
- 2K MAC Table



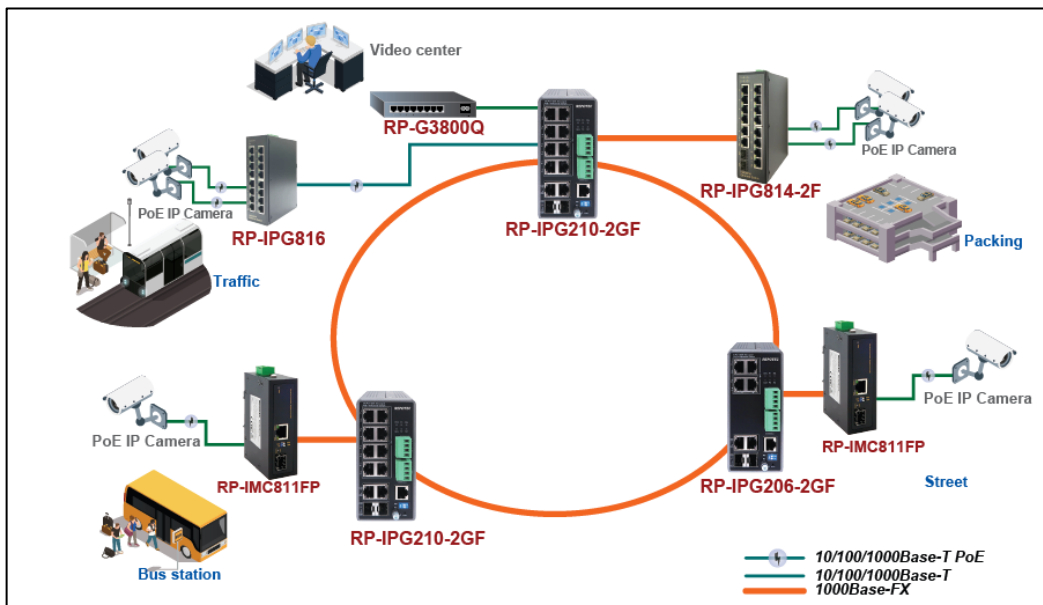
- 9KB Jumbo Frame
- Rugged Aluminum IP30 Protection enclosure
- Operating Temperature: -40°C to +75°C

## Specifications

<b>Standards</b>	<ul style="list-style-type: none"> <li>• IEEE 802.3 10Base-T Ethernet,</li> <li>• IEEE 802.3u 100Base-TX Fast Ethernet</li> <li>• IEEE 802.3ab 1000Base-T Gigabit Ethernet</li> <li>• IEEE 802.3z 1000Base-X Gigabit Ethernet</li> <li>• IEEE802.3x Flow Control and Back Pressure</li> <li>• IEEE802.3af/at PoE</li> </ul>
<b>Data Processing</b>	<ul style="list-style-type: none"> <li>• Store and Forward</li> </ul>
<b>Flow Control</b>	<ul style="list-style-type: none"> <li>• IEEE 802.3x Flow Control and Back Pressure</li> </ul>
<b>Switch Architecture</b>	<ul style="list-style-type: none"> <li>• Back-plane (Switching Fabric): 4Gbps</li> </ul>
<b>MAC Table Size</b>	<ul style="list-style-type: none"> <li>• 2K</li> </ul>
<b>Jumbo Frame</b>	<ul style="list-style-type: none"> <li>• 9KB</li> </ul>
<b>Packet Buffer Size</b>	<ul style="list-style-type: none"> <li>• 1M</li> </ul>
<b>Interface</b>	<ul style="list-style-type: none"> <li>• 1x RJ-45 10/100/1000BaseT(X) PSE with PoE Output power up to 30Watts</li> <li>• 1x 100/1000M SFP slot</li> </ul>
<b>Network Cable</b>	<ul style="list-style-type: none"> <li>• UTP/STP above Cat.5e Cable</li> <li>• EIA/TIA-568 10-ohm (100m)</li> </ul>
<b>Protocol</b>	<ul style="list-style-type: none"> <li>• CSMA/CD</li> </ul>
<b>POE Pin Assignment</b>	<ul style="list-style-type: none"> <li>• 30 watts 2 pairs Mode A End Span V+, V+, V-, V- for pin 1, 2, 3, 6</li> </ul>
<b>LED indicators</b>	<ul style="list-style-type: none"> <li>• PWR (Green)</li> <li>• SFP Lnk/Act (Green)</li> <li>• RJ-45: Lnk/Act (Green), PoE (Amber)</li> </ul>
<b>DIP Switch</b>	<ul style="list-style-type: none"> <li>• Set SFP speed 100M or 1000M</li> </ul>
<b>Reverse polarity protection</b>	<ul style="list-style-type: none"> <li>• Present</li> </ul>
<b>Overload current protection</b>	<ul style="list-style-type: none"> <li>• Present</li> </ul>
<b>Power Supply</b>	<ul style="list-style-type: none"> <li>• 4 pin terminal block with 48V-56V VDC Power Input</li> <li>• SW ( Relay ): Relay switch for alarm</li> </ul>
<b>Alarm Relay Contact</b>	<ul style="list-style-type: none"> <li>• Relay outputs with current carrying capacity of 1 A @24VDC,</li> <li>• Relay in short circuit mode when power fails.</li> <li>• Relay in open circuit mode when power supply is connected</li> </ul>

<b>Power Consumption</b>	<ul style="list-style-type: none"> <li>• 2W @48 VDC full load, Without PoE</li> </ul>
<b>PoE power budget</b>	<ul style="list-style-type: none"> <li>• Max. PoE power 36watts at 56VDC input</li> </ul>
<b>Removable Terminal Block</b>	<ul style="list-style-type: none"> <li>• Provide 4 pin terminal block</li> <li>• Wire range: 0.34mm<sup>2</sup> to 2.5mm<sup>2</sup></li> <li>• Solid wire (AWG):12-24/14-22</li> <li>• Stranded wire(AWG): 12-24/14-22</li> <li>• Torque:5lb-In/0.5Nm/0.56Nm</li> <li>• Wire Strip length: 7-8mm</li> </ul>
<b>Operating Temperature</b>	<ul style="list-style-type: none"> <li>• -40°C ~75°C</li> </ul>
<b>Operating Humidity</b>	<ul style="list-style-type: none"> <li>• 5% to 95% (Non-condensing)</li> </ul>
<b>Storage Temperature</b>	<ul style="list-style-type: none"> <li>• -40°C ~85°C</li> </ul>
<b>Housing</b>	<ul style="list-style-type: none"> <li>• Rugged Aluminum ,IP30 Protection</li> </ul>
<b>Dimension</b>	<ul style="list-style-type: none"> <li>• 103.5 x 32 x 81.5mm (LxWxD)</li> </ul>
<b>Installation mounting</b>	<ul style="list-style-type: none"> <li>• DIN Rail mounting and Wall Mounting</li> </ul>
<b>Safety</b>	<ul style="list-style-type: none"> <li>• IEC EN60950-1</li> </ul>
<b>EMC/EMS</b>	<ul style="list-style-type: none"> <li>• CE, FCC</li> </ul>
<b>EMI</b>	<ul style="list-style-type: none"> <li>• FCC Part 15 Subpart B Class A, CE EN 55022 Class A</li> </ul>
<b>Vibration</b>	<ul style="list-style-type: none"> <li>• EN 50155 / EN 60068-2-6</li> </ul>
<b>Shock</b>	<ul style="list-style-type: none"> <li>• EN 50155 / EN 60068-2-27</li> </ul>
<b>Free Fall</b>	<ul style="list-style-type: none"> <li>• EN 50155 / EN 60068-2-32</li> </ul>

## Application



## Ordering information

**RP-IMC811FP**      10/100/1000Base-TX to 100/1000Base-X SFP Industrial PoE+ Media Converter (30W)

**REPOTEC CO., LTD.**

3F., No.258, Liancheng Rd., Zhonghe District., New Taipei City 235, Taiwan

TEL: 886-2-8227-1888 FAX: 886-2-8227-1818