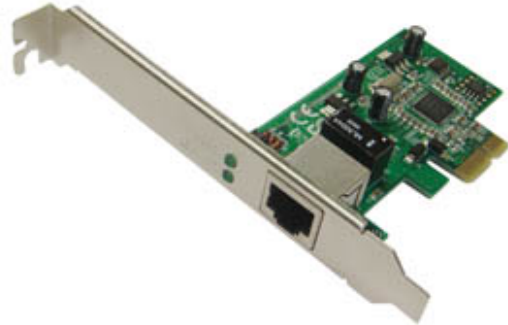




RP-3200EX

PCI Express Gigabit Ethernet Adapter



The RP-3200EX is a high performance Gigabit Ethernet adapter designed for PCI Express Bus, which has better performance than the current PCI interface.

With supporting connection speed up to 1000 Mbps, the RP-3200EX boost your networking throughput easily. It allows users to transfer high-bandwidth needed files faster and hence get a real efficiency improvement.

The RP-3200EX also support NWay auto-negotiation that detects the networking speed (10/100/1000 Mbps) and the duplex modes (full/half) automatically. Auto-MDI/MDI-X is also supported to alleviate the effort choosing crossover cables.

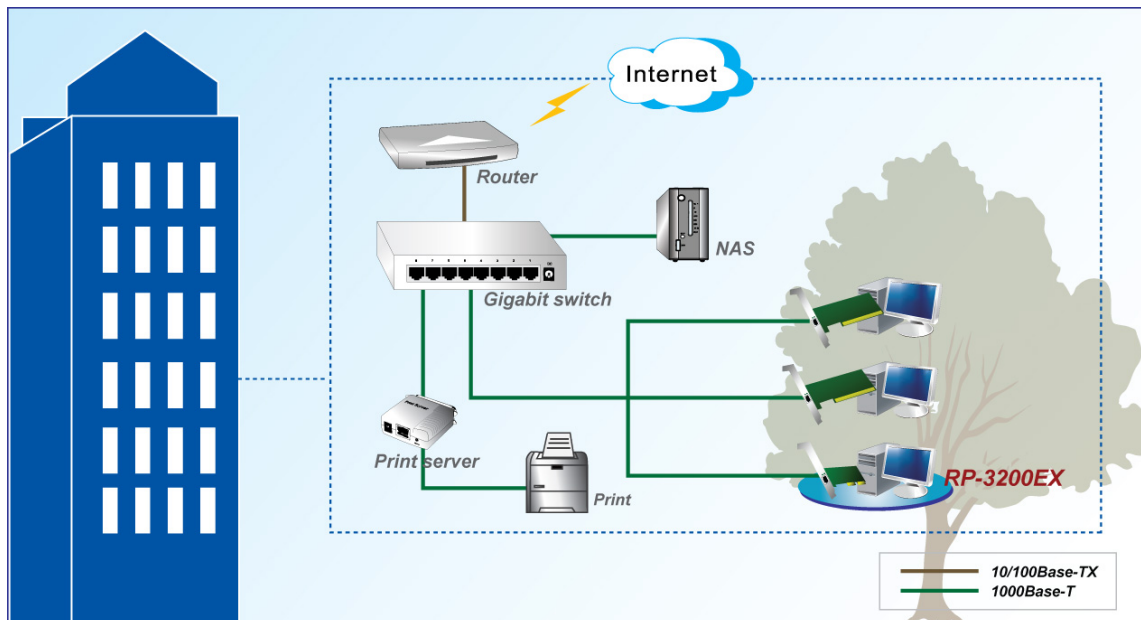
Features

- Comply with CSMA/CD protocol
- Supports with 10/100/1000 Mbps and Full/Half-Duplex auto negotiation
- Support Full Duplex flow control (IEEE 802.3x)
- Support Auto-MDI/ MDI-X auto crossover
- Support Wake-On-LAN
- ACPI Power Management, compliant to ACPI 2.0
- Integrated 128KB Frame Buffer Memory
- Support Windows 2000/X64/XP/VISTA/7/8 above

Specifications

Standards	<ul style="list-style-type: none"> • IEEE 802.3ab: 1000BASE-T • IEEE 802.3u: 100BASE-TX • IEEE 802.3: 10BASE-T • IEEE 802.3z / IEEE 802.1p
Ports	<ul style="list-style-type: none"> • 1 * 10/100/1000 Mbps RJ-45 ports • Supports Auto MDI/MDI-X
BUS Type	<ul style="list-style-type: none"> • PCI Express 1.1
Network Media	<ul style="list-style-type: none"> • 1000BASE-T (4 pair Category 5 TP cable required) • 100BASE-TX (2 pair Category 5 TP cable required) • 10BASE-T (2 pair Category 3, 4, and 5 TP required) • Full-Duplex available in three modes
Memory	<ul style="list-style-type: none"> • Integrated 128KB Frame Buffer Memory
LED	<ul style="list-style-type: none"> • LNK/ACT; 1000Mbps
Driver support	<ul style="list-style-type: none"> • Windows 2000/X64/XP/VISTA/7/8 above
Environment	<ul style="list-style-type: none"> • Operating Temperature : 0°C~40°C • Operating Humidity : 10%~90% (Non-condensing)
Certification	<ul style="list-style-type: none"> • FCC, CE

Application



Ordering information

RP-3200EX PCI Express Gigabit Ethernet Adapter

RP-3200EXL PCI Express Gigabit Ethernet Adapter, w/ Low Profile Bracket

REPOTEC CO., LTD.

3F, No.258, Lian Cheng Rd., Chung Ho City, Taipei Hsien 235, TAIWAN
 TEL: 886-2-8227-1888 FAX: 886-2-8227-1818