

>> RP-1450FC

>> RP-1450FT

100 Base - FX PCI Ethernet Adapter, SC/ST

RP-1450FC/FT is a PCI Fast Ethernet adapter for using in personal computers with PCI computer bus slots, It fully compliant with all IEEE 802.3u and 100Base-FX standards, It design for both Standards profile and Low profile PC

and two types of fiber transceiver SC or ST. The maximum transfer distance of the device is 2km.

LED indicators (LINK/ACT, FDX) on the bracket will

help users to oversee the network/board link, activities, collision and full-duplex status.

The adapter has PCI 2.2 plug-and-play capability and the driver support for most popular operating systems.



RP-1450FC



RP-1450FT

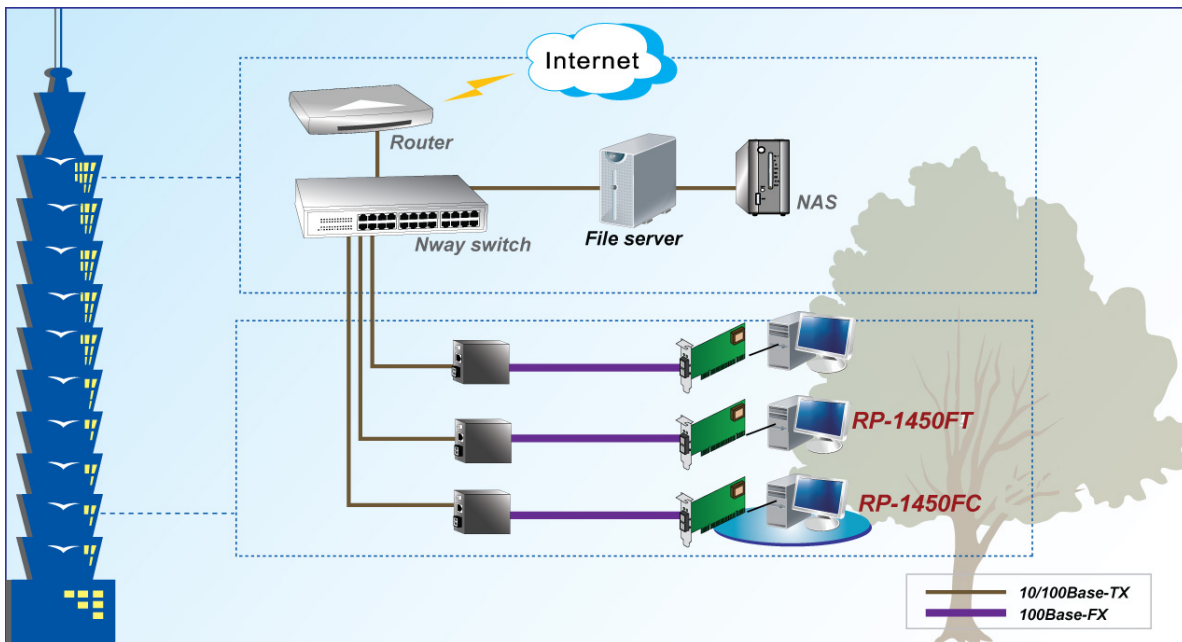
Features

- Fiber Transceiver Supported:
 - SC: MM 2km
 - ST: MM 2km
- Fast Ethernet fiber connection for desktop PCs
- Full/Half Duplex
- 32-bit bus master data transfer with PC host
- Flow Control for fast, reliable data
- Support 802.1p/q VLAN Tag
- IP multicast address filter mechanism
- Wake-on-LAN (WOL) power management
- PCI 2.2 Plug-and-Play installation

Specifications

Standards	<ul style="list-style-type: none"> • IEEE 802.3u Fast Ethernet 100Base-FX
LAN Drivers Supported	<ul style="list-style-type: none"> • NetWare Server 3.12, 4.1x, 5.x, 6.0 • NetWare DOS Client ODI • Windows 95, 98, 4.0, 2000, XP,7 • Linux
Boot Sever Supported	<ul style="list-style-type: none"> • Novell RPL Boot ROM • PXE Boot ROM
Data Transfer Mode / Speed	<ul style="list-style-type: none"> • PCI bus master • Full or Half Duplex mode • 100Mbps speed
LED Indicators	<ul style="list-style-type: none"> • Link/Activity, FDX on the bracket
Power Requirement	<ul style="list-style-type: none"> • 1.0A@+ 5V
Environment	<ul style="list-style-type: none"> • Operating Temperature: 0°C ~ 45°C • Storage Temperature: -20°C ~ 70°C • Humidity: 10% ~ 90% (Non-Condensing)
Dimension	<ul style="list-style-type: none"> • 140 * 120 mm
Certification	<ul style="list-style-type: none"> • FCC,FC

Specification



Ordering information

- RP-1450FC** 100Base-FX PCI Ethernet Adapter, SC
- RP-1450FT** 100Base-FX PCI Ethernet Adapter, ST