



RP-IP509 4-P Broadband Router

RP-IP509 4-P Broadband Router offers reliable 10/100Mbps internet access. It features a WAN interface for easy connection to DSL, cable modems, or broadband access. With a built-in NAT function, it acts as a firewall to protect your network. Manage and configure settings through the web-based interface and easily upgrade firmware.

Experience fast and secure connectivity with the RP-IP509. Its integrated 4-port Fast Ethernet switch allows easy connection of multiple devices. The router supports PPTP and L2TP protocols for added flexibility. Its browser-based configuration is user-friendly, ensuring a simple setup for consumers.

Upgrade your internet experience with the RP-IP509 4-P Broadband Router. Connect multiple devices, share internet connections, and protect your network with ease. Enjoy hassle-free configuration, secure browsing, and efficient data management with this advanced router.

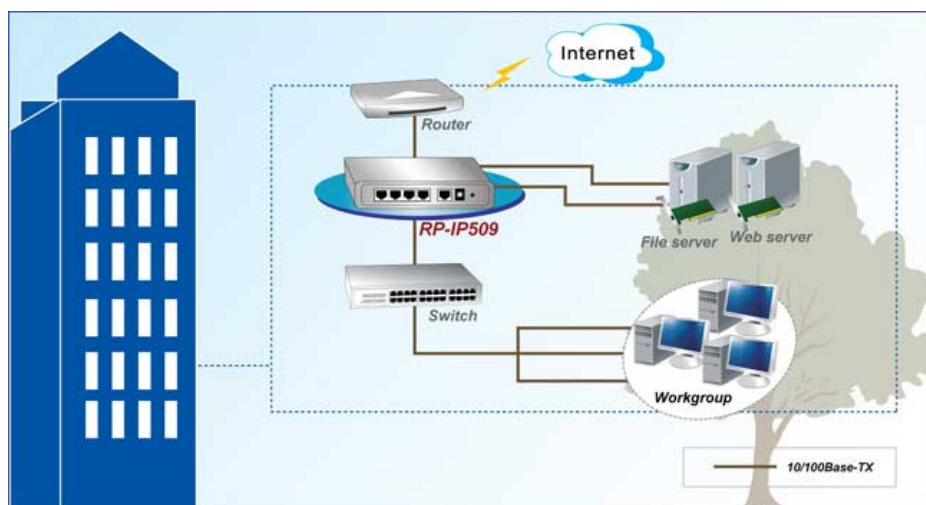
Features

- 10/100Mbps WAN interface for DSL, cable modem, or broadband access.
- Integrated 4-port Fast Ethernet switch with MDI/MDIX auto-sensing.
- Built-in NAT function for firewall protection against external threats.
- Browser-based interface for easy configuration and management.
- Support for PPTP and L2TP protocols.
- Enables multiple PCs and devices to share a single internet connection.
- Reliable and fast internet access for seamless connectivity.
- Secure browsing and data protection for your internal network.
- Easy firmware upgrades via web or Windows application.
- User-friendly installation and setup for consumers.

Specifications

ADSL Features	<ul style="list-style-type: none"> • IEEE 802.3 10Base-T Ethernet • IEEE 802.3u 100Base-TX Fast Ethernet
Interface	<ul style="list-style-type: none"> • 4-P * LAN, 1-P * WAN
Memory	<ul style="list-style-type: none"> • Flash 512KB, DRAM 2MB
Firmware Platform	<ul style="list-style-type: none"> • Proprietary Kernel
Management Method	<ul style="list-style-type: none"> • Web-based
WAN Type	<ul style="list-style-type: none"> • Static IP Address • Dynamic IP Address (DHCP Client) • PPPoE • PPTP • Dial-Up Network
Connection Scheme	<ul style="list-style-type: none"> • Connect on Demand/Auto-Disconnect • Manually Connect/Disconnect • Auto Reconnect
NAT Function	<ul style="list-style-type: none"> • One-to-Many NAT • One-to-One NAT • Virtual Server • Special Application • DMZ Host
Access Control	<ul style="list-style-type: none"> • MAC-level Access Control • Inbound/Outbound IP Filter • Domain Access Control
Firewall	<ul style="list-style-type: none"> • NAT Firewall with SPI mode • DoS Detection
Event Logging	<ul style="list-style-type: none"> • On-web logging • Syslog supported
Power Supply	<ul style="list-style-type: none"> • External power Adapter DC9V, 1A
Environment	<ul style="list-style-type: none"> • Operating Temperature: -20°C~ 70°C • Operating Humidity: 10%~90% (Non-Condensing)
Dimension	<ul style="list-style-type: none"> • 153 * 112 * 26 mm
Certifications	<ul style="list-style-type: none"> • FCC, CE

Application



Ordering information

RP-IP509 4-P Broadband Router

REPOTEC CO., LTD.

3F., No.258, Liancheng Rd., Zhonghe District., New Taipei City 235, Taiwan
 TEL: 886-2-8227-1888 FAX: 886-2-8227-1818